

# Lifting Solutions for People and Organizations

Lifting | Positioning | Stacking | Transporting | Tilting



**Presto** LIFTS **ECO A**

# Table of Contents

## Stackers

- Lift'n Buddy Elevating Two-Wheel Hand Trucks ..... 3
- PowerStak® Fully Powered Stackers ..... 4-5
- LiftStik Lifter Transporters ..... 6-7
- Manual Stackers ..... 8
- Battery, Pallet, Work Positioners & AC Stackers ..... 9-12
- Stacker Options ..... 12-13

## Pallet Positioners / Lift Tables

- Pallet Positioners ..... 14-15
- Skid Lifters ..... 15
- Low-Profile Lifts and Pallet Positioners ..... 15
- Floor Level Lifts and Pallet Positioners ..... 16
- Post Lift Tables ..... 17
- Light Duty Scissor Lift Tables ..... 18
- Compact & Portable Scissor Lift Tables ..... 19
- Scissor Lifts ..... 20
- Tandem & Dual Scissor Lifts ..... 21
- Heavy-Duty HH Series Scissor Lifts ..... 22
- Compact/Double Scissor Lifts ..... 23
- Super Heavy-Duty Lifts ..... 24-25
- Extended Vertical Travel Lifts ..... 26

## Tilters

- Floor Level Tilters ..... 27
- Container Tilters ..... 28
- Lift & Tilt Tables ..... 29
- Tilt Tables / Upenders ..... 30
- Manual Powered and Floor Turntables ..... 31

## Pneumatic Lifts

- Pneumatic Lift Tables ..... 32
- Pneumatic Lift & Tilt ..... 33
- Pneumatic Lift & Rotate ..... 34

## Lift Table Options

- Hydraulic/Pneumatic Lift Options ..... 35

## Loading Dock Lifts

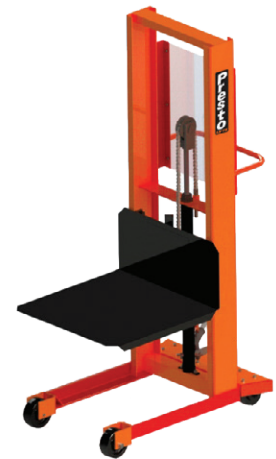
- PDL and HLD Series ..... 36

## Engineered Solutions

- Custom Engineered Solutions ..... 37

## Guides, Policies & Forms

- Product Selection Guidelines ..... 38-39
- Sales & Limited Warranty Policies ..... 39
- Application Worksheet ..... 39



## Lift'n Buddy Elevating Two-Wheel Hand Trucks

The FLNB200's powered, adjustable height platform positions loads at a comfortable height to eliminate bending stretching and manual lifting when loading, unloading or moving items between levels.

### Features

- Lightweight, durable aluminum frame
- Timing belt drive is fast, quiet and allows for precise load positioning with zero drift
- Push-button lift control mounted on handle
- Built in battery charger plugs into any standard 110 Volt outlet

Model Number	Lifting Capacity	Vertical Travel	Raised Height	Platform W x D	Backrest W x H	Wheels	Lifting Speed Empty	Battery Power	Battery Charger	Shipping Weight
FLNB200	200 lbs	37"	38 3/4"	20" x 16"	20" x 22"	8" x 2"	10 sec	(2) 12V 7Ahr	115 Volt	115 lbs



Tilts for easy transport    Convenient lift controls    Load backrest    Easy, fast charging    Freestanding



## Lift'n Buddy Keg Lifter

Built on the solid foundation of the FLNB200, the FKL200 Keg Lifter is the ultimate tool for keg transporting, lifting and loading. Compact size, unmatched maneuverability, ease-of-use and powered lift mechanism make the Keg Lifter perfect for: Beer Distributors, Pubs and Restaurants, Micro Breweries, Liquor Stores, Wholesale Clubs, Casinos, Nightclubs, Function Halls, Catering Facilities, Arenas, Stadiums and more.

### Features

- Works with any style / size keg
- Tilts back for distance travel or can be maneuvered on roto caster in tight quarters
- 175 pound capacity handles a full keg with ease
- Built in battery charger plugs into any standard 110 Volt outlet

Model Number	Load Capacity	Vertical Travel	Under Keg Clearance	Lifting Speed - Empty	Battery Power	Battery Charger	Shipping Weight
FKL200	175 lbs	34 1/4"	38 3/4"	10 sec	(2) 12V 7Ahr	115 Volt	115 lbs



Bracket holds kegs securely    Easily maneuvers store aisles    Load customer vehicles    Rotocasters turn in tight areas



## Lift'n Buddy Pail Lifter

The FPL200 Pail Lifter powered lift two-wheel truck transports, lifts, and positions 5-gallon plastic paint pails. Its unique lifting yoke slides under the bottom pail collar to securely support one, two or three pails. When raised the unit's under pail clearance is 35" allowing it to stack pails on top of one another, place them on counters, in tinters and shakers, on pallets and even into vans and trucks. .

### Features

- Operates in narrow aisles / crowded stores
- Picks pails from floor, pallets or counters
- Transport up to 3 pails at a time
- Retainer clips holds pails steady during transport
- Unit is free-standing even when loaded and raised

Model Number	Lifting Capacity	Lift Yoke Travel	Under Pail Clearance	Lifting Speed - Empty	Battery Power	Battery Charger	Shipping Weight
FPL200	200 lbs	37"	35"	10 sec	(2) 12V 7Ahr	115 Volt	115 lbs



Stacking and unstacking pails    Loading customer vehicles    Pail retaining clip    Optional case goods platform



# PowerStak® Fully Powered Stackers

## PowerStak® Next Generation Series

The Presto PowerStak® Next Generation Series builds on the highly successful legacy of our original PowerStak Units. This high-performance, fully-powered stacker provides flexibility and versatility in a sleek, stylish design with, low overall weight, and quiet operation allowing it to fit nicely into a wide variety of work environments.

### Features

- 24 volt AC/1000 watt drive motor
- 10" x 3" polyurethane drive wheel
- Polyurethane load wheels
- One piece forged forks on NAS and AS units.
- Two AGM 12 volt 75 amp/hr batteries
- 15 amp internal 115V charger
- Hour meter with battery status indicator
- E-Stop emergency stop switch
- Pin code access

### Straddle - For any pallet or skid



Model Number	Load Capacity	Raised Height	Lowered Height	Dimensions H x W x L	Fork O.D.	Fork Dimensions	Base/Legs I.D./O.D.	Shipping Weight
<b>PPS Series - Adjustable Base - Straddle (40-50" I.D.) - 24" Load Center</b>								
PPS2600-62NAS	2600 lbs	62"	2-3/4"	79 x 48-58 x 68"	12-1/2" - 27"	4" x 42"	40-48" / 50-58"	1340 lbs
PPS2600-101AS	2600 lbs	101"	2-3/4"	73 - 123 x 48-58 x 72"	12-1/2" - 27"	4" x 42"	40-48" / 50-58"	1585 lbs
PPS2600-125AS	2600 lbs	125"	2-3/4"	85 - 147 x 48-58 x 73"	12-1/2" - 27"	4" x 42"	40-48" / 50-58"	1630 lbs

### Fork Over - For open bottom pallets or skids



Model Number	Load Capacity	Raised Height	Lowered Height	Dimensions H x W x L	Fork O.D.	Fork Dimensions	Shipping Weight
<b>PPS Series - Fork Over - 21" Overall Fork Width - 24" Load Center</b>							
PPS2600-62NFO-21	2600 lbs	62"	3-1/2"	78 x 32 x 66"	21"	6" x 42"	1080 lbs
<b>PPS Series - Fork Over - 27" Overall Fork Width - 24" Load Center</b>							
PPS2600-62NFO-27	2600 lbs	62"	3-1/2"	78 x 32 x 66"	27"	6" x 42"	1080 lbs



Model PPS2200-62NFO



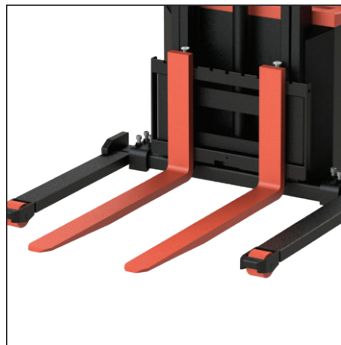
Model PPS2200-62NAS



Model PPS2200-125NAS

# PowerStak® Fully Powered Stackers

## PowerStak Features



*Class 2 adjustable fork carriage with forged forks.*



*Ergonomic handle with pin code access and battery discharge indicator.*



*Auto-reversing "belly bump" switch protects operator. Dual lift/lower controls and horn access are all within easy reach.*



*Turtle speed setting reduces drive speed by 50% for precise positioning.*



*Tight turning radius allows PowerStak to operate in significantly narrower aisles than conventional forklift trucks.*



*AC controller with advanced CAN Bus system.*



*Sealed absorbed glass mat (AGM) deep cycle batteries are standard.*



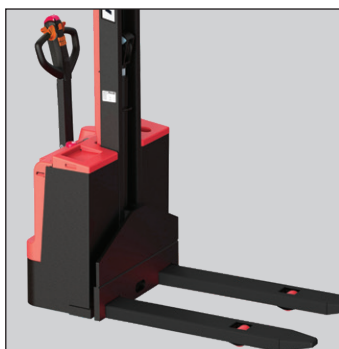
*Solid steel straddle legs provide rigidity and eliminate deflection even under maximum load conditions.*



*PPS2600-62 NAS and NFO models feature a narrow mast design which provides excellent operator visibility.*



*PPS2600-101AS and PPS2600-125AS models are equipped with a two-stage telescoping mast.*



*Fork over design (NFO) with fixed legs and forks. For use with open bottom pallets or skids only.*



*NAS and AS Models feature adjustable straddle bases with inside dimension of 40" to 50" and forged forks.*

## Popular Options and Accessories

PowerStak units are available with these standard options. Other options may be available, however, not all options shown are available for every PowerStak model. Please contact Presto Lifts for details.

**Load Backrests** - 36" and 48" high, to help stabilize taller loads.

**High-Traction Rubber Drive Wheel** - for use on epoxy floors or any application requiring more traction.

**Factory Set Travel Speed** - Specify maximum travel speed from 1.2 to 3 MPH.

**Adjustable Fork Lowering Speed** - Adjustable control mounded on inside of cabinet.

**LiFePO4, Lithium Iron Phosphate Battery** - With battery management system and quick charge feature.

# LiftStik Lifter Transporters

## LiftStik Custom Series

Superior durability and maneuverability make these units perfect for any manufacturing facility or production environment, food processing and pharmaceutical facility.

### Features

- Aluminum and powder coated modular steel construction, mix and match to create the ideal lifting solution
- Includes a Safety clutch for controlled lifting, and overload protection
- Ergonomic handle with soft start control switch
- Optional two speed plug and play remote control pendant
- 115V internal charger - sealed AGM batteries
- Choose from two lift heights, 67" or 84" with either 285 or 440 lbs. capacity
- Four swivel casters - large rear casters have foot operated locks
- Available with fixed or adjustable base legs (specify)



Optional remote control pendant



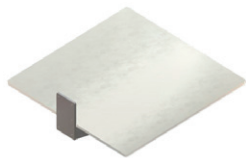
PLS67-285 with adjustable base legs and UHMW platform

Model Number	Load Capacity	Raised Height	Lowered Height	Dimensions H x W x L	Tool / Platform W x L	Lifting Speed*	Power Unit	Battery Charger	Shipping Weight
<b>LiftStik Compact &amp; Adjustable Base Series</b>									
PLS67-285	285 lbs	67"	3 1/2"	76 x 20 - 28 x 36"†	UHMW - 19 1/2 x 19 1/2"	22 sec.	24VDC	115 Volt	190 lbs.
PLS67-440	440 lbs	67"	3 1/2"	76 x 20 - 28 x 36"†	Stainless Steel 19 1/2 x 19 1/2"	22 sec.	24VDC	115 Volt	250 lbs.
PLS84-285	285 lbs	84"	3 1/2"	92 x 20 - 28 x 36"†	UHMW - 19 1/2 x 19 1/2"	30 sec.	24VDC	115 Volt	220 lbs.
PLS84-440	440 lbs	84"	3 1/2"	92 x 20 - 28 x 36"†	Stainless Steel 19 1/2 x 19 1/2"	30 sec.	24VDC	115 Volt	180 lbs.

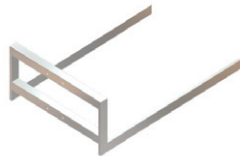
\*Speed of unit without load. † Adjustable Base

## LiftStik Specialized Applications

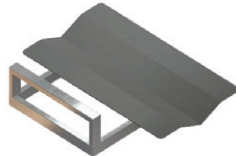
LiftStik models can be configured with a wide range of tools and attachments for roll handling, drum handling, and server applications.



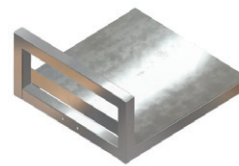
UHMW Plastic Platform



Fixed Forks



Wave V-Cradle Platform



Heavy-Duty Stainless Platform



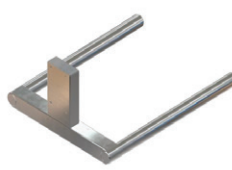
Server Platform - Side Entry



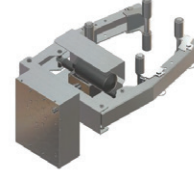
Roll Manipulator



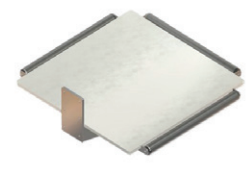
Pivoting Crane Arm



Twin Mandrel



Clamp & Turn



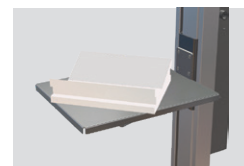
UHMW Platform with Rollers

## LiftStik Compact-Quick Lift Series

Powered quick lift with exceptional maneuverability make these units ideal for use anywhere in your facility where speed and ergonomics is needed. Units weigh only 70 lbs.

### Features

- Aluminum and powder coated steel construction for easy handling
- Load is carried directly over wheels for excellent stability
- Ergonomic handle with easy access fingertip lift control switch
- 115V external charger, sealed AGM batteries
- Four swivel casters - rear casters have foot operated floor locks



PLS53-110



PLS53-150

Model Number	Load Capacity	Raised Height	Lowered Height	Dimensions H x W x L	Tool / Platform W x L	Lifting Speed*	Power Unit	Battery Charger	Shipping Weight
<b>LiftStik Compact &amp; Adjustable Base Series</b>									
PLS53-150	150 lbs	53"	4 1/2"	60 x 19 1/2 x 31"	19 x 19"	11 sec.	24VDC	115 Volt	140 lbs.
PLS53-110	110 lbs	53"	4 1/2"	60 x 18 x 31"	19 x 19" w/V-Cradle	11 sec.	24VDC	115 Volt	150 lbs.

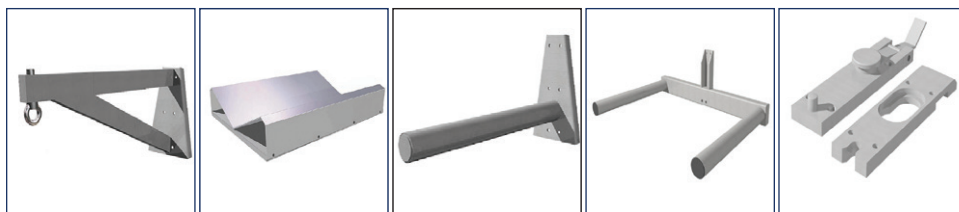
\*Speed of unit without load.

## LiftStik Series

With capacities from 185 lbs to over 400 lbs, there's almost nothing these lifter/transporters can't do. A continuous lifting chain provides two vertical travel speeds with smooth starts and stops, precise load positioning and zero drift. There's no risk of hydraulic fluid leaks so the LiftStik is suited for a wide range of light industrial, laboratory and even office applications.

### Features

- Continuous lifting chain provides two vertical travel speeds
- Smooth starts and stops
- Precise load positioning with zero drift
- Loads are centrally and evenly distributed over all 4 wheels for maximum stability
- Push-button lift control mounted on handle has coiled cord for remote operation
- Two-speed function, both up and down
- Battery charge indicator is easily visible
- Smooth rolling ball bearing wheels
- Rear wheels equipped with toe guards
- The mast and the motor covers are sealed
- Mechanical overload protection
- All models come standard with a platform mounted on the forks



Lifting arm with bolt

V-cradle platform with full 360° rotation

Reel mandrel

Twin boom

Quick connect brackets

Model Number	Load Capacity	Raised Height	Lowered Height	Dimensions H x W x L	Platform W x L	Lifting Speed*	Power Unit	On Board Charger	Shipping Weight
<b>LiftStik Series</b>									
PLS52-185	185 lbs	56"	5"	63 x 23-1/2 x 31"	23-1/2 x 18-1/2"	17 sec	24VDC	115 Volt	105 lbs
PLS60-220	220 lbs	65"	5-1/8"	76 x 23-1/2 x 33"	23-1/2 x 18-1/2"	20 sec	24VDC	115 Volt	147 lbs
PLS48-450	445 lbs	52"	4-1/8"	63 x 22 x 40"	22 x 23-1/2"	22 sec	24VDC	115 Volt	190 lbs

\*Speed of unit without load.



## Foot-Operated Stackers

Designed to easily handle all types of lifting tasks from transporting dies and molds to stacking skids and pallets. The simple to operate foot pedal provides effortless lifting. Compact enough to fit through standard doorways and operate in confined/congested spaces. Can be equipped with forks or solid platforms.

### Features

- 1" thick x 3" wide adjustable solid steel forks
- Forks adjust from 6-1/2" to 26-1/2" O.D.
- 12" high fork backs on non-straddle models
- 14" high fork backs on straddle models
- Foot-operated pump with tip-toe release and variable speed lowering
- Lift rise approximately 1-1/8" per stroke
- Perforated metal screen
- Foot-operated floor lock
- Leaf-type chain with 8250 lb. yield point
- High-impact, floor-saving phenolic wheels



Model Number	Load Capacity	Raised Height	Lowered Height	Dimensions H x W x L	Base Legs I.D. / O.D.	Wheel Dia. Front/Rear	Shipping Weight
<b>M100 Series - Platform (24" W x 24" L) - 15" Load Center</b>							
M152	1000 lbs	52"	5-1/4"	66 x 25 x 38"	15" / 21"	5" / 4"	270 lbs
M166	1000 lbs	66"	5-1/4"	80 x 25 x 38"	15" / 21"	5" / 4"	290 lbs
M178	1000 lbs	78"	5-1/4"	92 x 25 x 38"	15" / 21"	5" / 4"	300 lbs
<b>M300 Series - Platform (32" W x 30" L) - 18" Load Center</b>							
M352	1000 lbs	52"	5-1/4"	66 x 33 x 44"	24" / 30"	5" / 4"	350 lbs
M366	1000 lbs	66"	5-1/4"	80 x 33 x 44"	24" / 30"	5" / 4"	370 lbs
M378	1000 lbs	78"	5-1/4"	92 x 33 x 44"	24" / 30"	5" / 4"	390 lbs
<b>M200 Series - Adjustable 25" Forks (Non-Straddle) - 15" Load Center</b>							
M252	1000 lbs	52"	5-1/4"	66 x 27 x 42"	15" / 21"	5" / 4"	340 lbs
M266	1000 lbs	66"	5-1/4"	80 x 27 x 42"	15" / 21"	5" / 4"	360 lbs
M278	1000 lbs	78"	5-1/4"	92 x 27 x 42"	15" / 21"	5" / 4"	390 lbs
<b>M400 Series - Adjustable 30" Forks (Straddle) - 18" Load Center</b>							
M452	1000 lbs	50"	3-1/4"	66 x 33 x 49"	26" / 32"	5" / 4"	370 lbs
M466	1000 lbs	64"	3-1/4"	80 x 33 x 49"	26" / 32"	5" / 4"	390 lbs
M478	1000 lbs	76"	3-1/4"	92 x 33 x 49"	26" / 32"	5" / 4"	410 lbs

## Hand-Operated Stackers

A two-piston hand pump mechanism provides effortless lifting of loads of up to 2,000 lbs. at an 18" load center to heights up to 76".

### Features

- 1-1/2" thick x 3" wide adjustable solid steel forks
- Forks adjust from 6-1/2" to 26-1/2" O.D.
- 14" high fork backs
- Slip-on 32" x 30" platform available
- Hand-operated pump features variable control hand release lowering
- Lift rise approximately 1/2" per stroke
- Perforated metal screen
- Foot-operated floor lock
- Dual leaf-type chain with 8250 lb yield point
- High-impact, floor-saving phenolic wheels



Model Number	Load Capacity	Raised Height	Lowered Height	Dimensions H x W x L	Base Legs I.D. / O.D.	Wheel Dia. Front/Rear	Shipping Weight
<b>M800 Series - Adjustable 30" Forks (Straddle) - 18" Load Center</b>							
M852-2000	2000 lbs	50"	3-1/4"	66 x 33 x 51"	26" / 32"	5" / 5"	460 lbs
M866-2000	2000 lbs	64"	3-1/4"	80 x 33 x 51"	26" / 32"	5" / 5"	480 lbs
M878-2000	2000 lbs	76"	3-1/4"	92 x 33 x 51"	26" / 32"	5" / 5"	500 lbs

## Battery Stackers - 15" Load Center

Small and maneuverable, ideal for a wide variety of uses. These stackers feature powered lift and capacities to 2,000 lbs. Use with small open bottom pallets or skids.

### Features

- Forks adjust from 6-1/2" to 26-1/2" O.D.
- Adjustable solid steel forks:
  - 1" thick x 3" on 1000 lb
  - 1-1/2" thick x 3" on 2000 lb models
- 12" high fork backs
- Lifting speed - 5" per second
- Heavy-duty 12V battery
- Foot-operated floor lock
- Leaf-type chain with 8250 lb yield point
- Optional 24" x 24" slip-on platform
- Floor-saving phenolic wheels
- Perforated metal screen
- LED dash mount – diagnostic display
- 3-position "Comfort Cushion" push handle
- Custom microprocessor charger
- Quick connect battery cables

Model Number	Load Capacity	Raised Height	Lowered Height	Dimensions H x W x L	Base Legs I.D. / O.D.	Wheel Dia. Front/Rear	Shipping Weight
<b>B600 Series - Adjustable 25" Forks (Non-Straddle) - 15" Load Center</b>							
B652	1000 lbs	52"	5-1/4"	67 x 27 x 49"	15" / 21"	5" / 5"	500 lbs
B666	1000 lbs	66"	5-1/4"	81 x 27 x 49"	15" / 21"	5" / 5"	520 lbs
B678	1000 lbs	78"	5-1/4"	93 x 27 x 49"	15" / 21"	5" / 5"	540 lbs
B652-2000	2000 lbs	52"	5-1/4"	67 x 27 x 49"	20" / 26"	5" / 5"	550 lbs
B666-2000	2000 lbs	66"	5-1/4"	81 x 27 x 49"	20" / 26"	5" / 5"	570 lbs
B678-2000	2000 lbs	78"	5-1/4"	93 x 27 x 49"	20" / 26"	5" / 5"	590 lbs



## Straddle Stackers - 20" Load Center

Presto Straddle Stackers are the perfect solution for medium duty pallet handling applications. They are available in capacities up to 2,000 lbs. with lift heights up to 127".

### Features

- Fixed and telescopic masts
- Adjustable solid steel forks:
  - 1 1/2" thick x 3" wide x 30" long
- Forks adjust from 6-1/2" to 26-1/2" O.D.
- B Series Fork Back Height: 15"
- BT Series Fork Back Height: 14"
- Lifting speed - 5" per second
- Flow control valve for smooth lowering
- High-impact, floor-saving phenolic load wheels
- Turning radius with 40" load:
- 85" aisle for B800 series
- 87" aisle for BT800 series (Allows for 12" of operator clearance)
- Hand-operated floor lock
- Heavy-duty 12V battery
- Custom microprocessor charger
- Optional 33" x 30" slip-on platform
- Dual leaf-type chains with 8250 lb yield point

Model Number	Load Capacity	Raised Height	Lowered Height	Dimensions H x W x L	Base Legs I.D. / O.D.	Wheel Dia. Front/Rear	Shipping Weight
<b>B800 Series - 20" Load Center</b>							
B862-2000	2000 lbs	62"	2-1/2"	80 x 32 x 54"	26" / 32"	5" / 4"	635 lbs
B874-2000	2000 lbs	74"	2-1/2"	92 x 32 x 54"	26" / 32"	5" / 4"	660 lbs
<b>BT800 Series - 20" Load Center</b>							
BT894-2000	2000 lbs	94"	2-1/2"	119/74 x 38 x 55"	32" / 38"	5" / 4"	880 lbs
BT8107-2000	2000 lbs	107"	2-1/2"	133/81 x 38 x 55"	32" / 38"	5" / 4"	930 lbs
BT8127-2000	2000 lbs	127"	2-1/2"	154/92 x 38 x 55"	32" / 38"	5" / 4"	980 lbs



# Pallet Stackers

## Pallet Stackers - 24" Load Center

Presto Pallet Stackers are ideal for use with pallet racks. Choose from over 25 models with capacities to 2,700 lbs., lifting heights to 12 feet and a wide variety of available options.

### Features

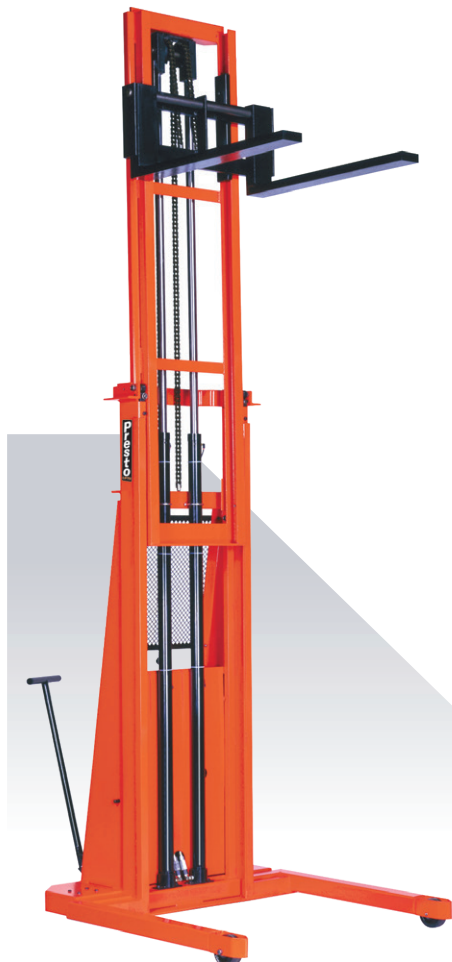
- Fixed or adjustable base
- Fixed and telescopic masts
- Adjustable solid steel forks
  - 1-1/2" thick x 3" wide x 36" long (1500 & 2000 lb. capacities)
  - 1-1/2" thick x 4" wide x 36" long (2700 lb. capacities)
- Lifting speed: 4"/sec. 1500 & 2000 lb. - 2" per sec. 2700 lb.
- Hand-operated floor lock
- Heavy-duty 12V battery
- Custom microprocessor charger
- Fifth wheel for greater mobility
- Dual leaf-type chains with 8250 lb. yield point
- Dual roller chain for 2700 lb. lift
- Forks adjust from 6-1/2" to 30" O.D.
- 14" high fork backs
- Turning radius with 48" load:
  - 106" aisle with 42" I.D. base
  - 110" aisle with 50" I.D. base
  - 112" aisle with adjustable base @ 50" I.D.



PS Series Fixed Straddle Fixed Mast



PSTA Series Adjustable Straddle Telescoping Mast



Model Number	Load Capacity	Raised Height	Lowered Height	Dimensions H x W x L	Base Legs I.D. / O.D.	Wheel Dia. Front/Rear	Shipping Weight
<b>PS Series - 42" I.D. Straddle - 24" Load Center</b>							
PS262	2000 lbs	62"	2-1/2"	82 x 48 x 70"	42" / 48"	5" / 4"	875 lbs
PS274	2000 lbs	72"	2-1/2"	94 x 48 x 70"	42" / 48"	5" / 4"	925 lbs
PS2762	2700 lbs	60"	2-1/2"	84 x 48 x 70"	42" / 48"	5" / 4"	1000 lbs
PS2774	2700 lbs	72"	2-1/2"	96 x 48 x 70"	42" / 48"	5" / 4"	1045 lbs
<b>PS50 Series - 50" I.D. Straddle - 24" Load Center</b>							
PS262-50	2000 lbs	62"	2-1/2"	82 x 56 x 70"	50" / 56"	5" / 4"	900 lbs
PS274-50	2000 lbs	74"	2-1/2"	94 x 56 x 70"	50" / 56"	5" / 4"	975 lbs
PS2762-50	2700 lbs	60"	2-1/2"	84 x 56 x 70"	50" / 56"	5" / 4"	1025 lbs
PS2774-50	2700 lbs	72"	2-1/2"	96 x 56 x 70"	50" / 56"	5" / 4"	1070 lbs
<b>PSA Series - Adjustable Base - Straddle (35" I.D. to 50" I.D.) - 24" Load Center</b>							
PSA262	2000 lbs	62"	2-1/2"	82 x 41-56 x 72"	35-50" / 41-56"	5" / 5"	1000 lbs
PSA274	2000 lbs	74"	2-1/2"	94 x 41-56 x 72"	35-50" / 41-56"	5" / 5"	1045 lbs
PSA2762	2700 lbs	60"	2-1/2"	84 x 41-56 x 72"	35-50" / 41-56"	5" / 5"	1145 lbs
PSA2774	2700 lbs	72"	2-1/2"	96 x 41-56 x 72"	35-50" / 41-56"	5" / 5"	1175 lbs
<b>PST Series - 42" I.D. Straddle - Telescoping Mast - 24" Load Center</b>							
PST294	2000 lbs	94"	2-1/2"	119/73 x 48 x 71"	42-48"	5" / 4"	1000 lbs
PST2107	2000 lbs	107"	2-1/2"	133/81 x 48 x 71"	42-48"	5" / 4"	1050 lbs
PST2127	2000 lbs	127"	2-1/2"	155/93 x 48 x 71"	42-48"	5" / 4"	1100 lbs
PST2144	2000 lbs	144"	2-1/2"	169/99 x 48 x 71"	42-48"	5" / 4"	1150 lbs
PST2794	2700 lbs	94"	2-1/2"	119/75 x 48 x 71"	42-48"	5" / 4"	1190 lbs
PST27107	2700 lbs	107"	2-1/2"	133/81 x 48 x 71"	42-48"	5" / 4"	1240 lbs
PST27127	2700 lbs	127"	2-1/2"	156/94 x 48 x 71"	42-48"	5" / 4"	1290 lbs
<b>PST 50 Series - 50" I.D. Straddle - Telescoping Mast - 24" Load Center</b>							
PST294-50	2000 lbs	94"	2-1/2"	119/73 x 56 x 71"	50-56"	5" / 4"	1010 lbs
PST2107-50	2000 lbs	107"	2-1/2"	133/81 x 56 x 71"	50-56"	5" / 4"	1060 lbs
PST2127-50	2000 lbs	127"	2-1/2"	155/93 x 56 x 71"	50-56"	5" / 4"	1110 lbs
PST2144-50	2000 lbs	144"	2-1/2"	169/99 x 56 x 71"	50-56"	5" / 4"	1170 lbs
PST2794-50	2700 lbs	94"	2-1/2"	119/75 x 56 x 71"	50-56"	5" / 4"	1200 lbs
PST27107-50	2700 lbs	107"	2-1/2"	133/81 x 56 x 71"	50-56"	5" / 4"	1250 lbs
PST27127-50	2700 lbs	127"	2-1/2"	156/94 x 56 x 71"	50-56"	5" / 4"	1300 lbs
<b>PSTA Series - Adjustable Base - Straddle (35" I.D. to 50" I.D.) - 24" Load Center</b>							
PSTA294	2000 lbs	94"	2-1/2"	119/73 x 41-56 x 73"	35-50" / 41-56"	5" / 5"	1150 lbs
PSTA2107	2000 lbs	107"	2-1/2"	133/80 x 41-56 x 73"	35-50" / 41-56"	5" / 5"	1200 lbs
PSTA2127	2000 lbs	127"	2-1/2"	154/92 x 41-56 x 73"	35-50" / 41-56"	5" / 5"	1250 lbs
PSTA2794	2700 lbs	94"	2-1/2"	120/75 x 41-56 x 73"	35-50" / 41-56"	5" / 5"	1400 lbs
PSTA27107	2700 lbs	107"	2-1/2"	133/81 x 41-56 x 73"	35-50" / 41-56"	5" / 5"	1450 lbs
PSTA27127	2700 lbs	127"	2-1/2"	155/93 x 41-56 x 73"	35-50" / 41-56"	5" / 5"	1500 lbs

Units over 93" in height will be shipped in the horizontal position.

## Work Positioners - 24" Load Center

These low mast stackers are the ultimate multifunction devices. Choose non-straddle for use with open bottom pallet and skids or straddle style for use with any type of pallet or skid.

### Features

- 2" thick x 6-1/4" wide x 42" long fixed steel forks
- 14" fork I.D. & 26-1/2" fork O.D.
- 17" high fork carriage
- Tiller handle steering for better maneuverability
- Hand-operated floor lock
- Lifting speed- 4"/sec. 2000 lb - 2"/sec. 3000 lb.
- Heavy-duty 12V deep cycle battery
- Custom microprocessor charger
- Wheels: nylon front/polyurethane rear
- Optional platforms available

Model Number	Load Capacity	Raised Height	Lowered Height	Dimensions H x W x L	Base Legs I.D. / O.D.	Wheel Dia. Front/Rear	Shipping Weight
<b>WP Series - Non-Straddle - 24" Load Center</b>							
WP36-20	2000 lbs	36"	3-1/4"	60 x 28 x 65"	14" / 26-1/2"	3" / 8"	850 lbs
WP60-20	2000 lbs	60"	3-1/4"	84 x 28 x 65"	14" / 26-1/2"	3" / 8"	880 lbs
WP36-30	3000 lbs	36"	3-1/4"	60 x 28 x 65"	14" / 26-1/2"	3" / 8"	870 lbs
WP60-30	3000 lbs	60"	3-1/4"	84 x 28 x 65"	14" / 26-1/2"	3" / 8"	980 lbs

For use with open bottom skids only. Not for use with closed bottom pallets.

<b>WPS42 Series - Straddle - 42" I.D. - 24" Load Center</b>							
WPS4236-20	2000 lbs	36"	2"	59 x 48 x 65"	42" / 48"	5" / 8"	880 lbs
WPS4260-20	2000 lbs	60"	2"	83 x 48 x 65"	42" / 48"	5" / 8"	920 lbs
WPS4236-30	3000 lbs	36"	2"	59 x 48 x 65"	42" / 48"	5" / 8"	900 lbs
WPS4260-30	3000 lbs	60"	2"	83 x 48 x 65"	42" / 48"	5" / 8"	970 lbs
<b>WPS50 Series - Straddle - 50" I.D. - 24" Load Center</b>							
WPS5036-20	2000 lbs	36"	2"	59 x 56 x 65"	50" / 56"	5" / 8"	890 lbs
WPS5060-20	2000 lbs	60"	2"	83 x 56 x 65"	50" / 56"	5" / 8"	970 lbs
WPS5036-30	3000 lbs	36"	2"	59 x 56 x 65"	50" / 56"	5" / 8"	920 lbs
WPS5060-30	3000 lbs	60"	2"	83 x 56 x 65"	50" / 56"	5" / 8"	990 lbs

For use with wooden closed bottom pallets, double sided pallets and open bottom skids.

## Counterweight Stackers - Manual Drive

Ideal for intermittent use applications where base legs could cause interference.

### Features

- Lifting speed - 5" per second
- Forks adjust from 6-1/2" to 20" O.D.
- 15-1/2" high fork backs
- Heavy-duty C100 foot-operated floor lock
- Heavy-duty 12V battery
- 1" thick x 3" wide adjustable solid steel forks
- Hinged door with capacity display
- LED dash mount - diagnostic display
- 3 position "Comfort Cushion" push handle
- Quick-connect battery cables

Model Number	Load Capacity	Raised Height	Lowered Height	Dimensions H x W x L	Wheel Diameter	Shipping Weight
<b>CW Series - Adjustable 25" Forks - 13" Load Center</b>						
C62A-200	200 lbs	62"	1"	80 x 27 x 36"	5" x 5"	750 lbs
C62A-400	400 lbs	62"	1"	80 x 27 x 36"	5" x 5"	900 lbs
C62A-600	600 lbs	62"	1"	80 x 27 x 36"	5" x 5"	1000 lbs
C62A-800	800 lbs	62"	1"	80 x 27 x 36"	5" x 5"	1100 lbs
C62A-1000	1000 lbs	62"	1"	80 x 27 x 36"	5" x 5"	1200 lbs
C74A-200	200 lbs	74"	1"	92 x 27 x 36"	5" x 5"	775 lbs
C74A-400	400 lbs	74"	1"	92 x 27 x 36"	5" x 5"	925 lbs
C74A-600	600 lbs	74"	1"	92 x 27 x 36"	5" x 5"	1025 lbs
C74A-800	800 lbs	74"	1"	92 x 27 x 36"	5" x 5"	1125 lbs
C74A-1000	1000 lbs	74"	1"	92 x 27 x 36"	5" x 5"	1225 lbs
<b>CW Series - Adjustable 30" Forks - 15" Load Center</b>						
C62A-15LC	1000 lbs	62"	1"	80 x 27 x 41"	5" x 5"	1450 lbs
C74A-15LC	1000 lbs	74"	1"	92 x 27 x 41"	5" x 5"	1475 lbs

Overall length including forks: C62A & C74A is 61"; C62A-15LC & C74A-15LC is 66"



WPS Series  
Straddle Base



WP Series  
Fork Over Base



Counterweight (ballast) is included in pricing and shipping weight.

# A/C Stackers and Stacker Options

## A/C Electric Stackers

These 1,000 lb. capacity stackers are powered by standard 115V single phase power. They are available in portable or stationary configurations with fixed or telescoping masts and lifting heights up to 130".

### Features

- 30" long adjustable solid steel forks 1" thick x 3" wide
- Lifting speed 4" per second
- Standard 1 HP 115/1/60 motor
- Other motors available
- 12" high fork backs
- Optional slip-on 32" x 30" platform
- Custom platforms available
- Leaf-type chain with 8250 lb yield point
- 1500 lb and 2000 lb capacities available
- Standard remote control with coil cord
- Coil cord (4' retracted, 20' extended)



Portable units shown with optional platform. Stationary units also available.

Model Number	Load Capacity	Raised Height	Lowered Height	Dimensions H x W x L	Base Legs I.D. / O.D.	Wheel Dia. Front/Rear	Shipping Weight
<b>EPF Series - Portable - 30" Forks - 18" Load Center</b>							
EPF752	1000 lbs	52"	5-1/4"	66 x 31 x 49"	24" / 30"	5" / 4"	490 lbs
EPF766	1000 lbs	66"	5-1/4"	80 x 31 x 49"	24" / 30"	5" / 4"	500 lbs
EPF778	1000 lbs	78"	5-1/4"	92 x 31 x 49"	24" / 30"	5" / 4"	530 lbs
<b>ESF Series - Stationary - 30" Forks - 18" Load Center</b>							
ESF750	1000 lbs	50"	3-1/4"	64 x 30 x 49"	24" / 30"	N/A	480 lbs
ESF764	1000 lbs	64"	3-1/4"	78 x 30 x 49"	24" / 30"	N/A	570 lbs
ESF776	1000 lbs	76"	3-1/4"	90 x 30 x 49"	24" / 30"	N/A	590 lbs
<b>EPFT Series - Portable - 30" Forks - 18" Load Center</b>							
EPFT796	1000 lbs	94"	5-1/4"	112/67 x 41 x 52"	34" / 40"	5" / 5"	800 lbs
EPFT7110	1000 lbs	110"	5-1/4"	133/80 x 41 x 52"	34" / 40"	5" / 5"	900 lbs
EPFT7130	1000 lbs	130"	5-1/4"	155/92 x 40 x 52"	34" / 40"	5" / 5"	980 lbs

Units over 93" in height will be shipped in the horizontal position.

## Stacker Front End Options and Attachments

### Ram

in Place of Standard Forks

Model Number	Description and Specification	Shipping Weight
Interchanges with forks on adjustable fork models with sheet metal back plates, for roll and coil handling.		
RR1	Ram 2-1/2" round x 20" L, 1000 lb cap @ 15" LC	13 lbs
RR2	Ram 2-1/2" round x 24" L, 1000 lb cap @ 18" LC	16 lbs
RR3	Ram 2-1/2" round x 13" L, 1000 lb cap @ 13" LC	12 lbs
RR4	Ram 2-1/2" round x 30" L, 1000 lb cap @ 15" LC	20 lbs
RS1	Ram 3" square x 20" L, 1500 lb cap @ 20" LC	15 lbs
RS2	Ram 3" square x 24" L, 1500 lb cap @ 18" LC	24 lbs
RS3	Ram 2-1/2" square x 30" L, 1500 lb cap @ 20" LC	22 lbs
RS4	Ram 3" square x 30" L, 1500 lb cap @ 20" LC	27 lbs
Interchanges with fork models with shaft (ps) back plate.		
RSPS24	Ram 3" square x 24" L, 1500 lb cap @ 18" LC	35 lbs
RSPS30	Ram 3" square x 30" L, 1500 lb cap @ 20" LC	35 lbs
RSPS36	Ram 3" square x 36" L, 1500 lb cap @ 24" LC	35 lbs

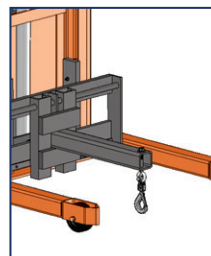
### Slip-On Platform Options

Model Number	Description and Specification	Shipping Weight
SP24	Slip-on platform, 24" x 24" for 13" and 15" LC	32 lbs
SP32	Slip-on platform, 32" x 30" for 18" and 20" LC	100 lbs
SP40	Slip-on platform, 40" x 36" for 24" LC	184 lbs
Custom platform sizes available; please contact Sales.		

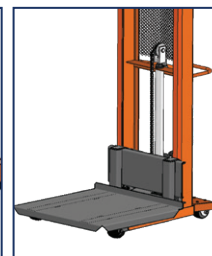
### Boom with Hook Options

in Place of Standard Forks

Model Number	Description and Specification	Shipping Weight
Mounts on fork model with sheet metal back plates for lifting and suspending loads.		
B13	13" boom with hook, 1000 lb cap @ 13" LC	22 lbs
B15	15" boom with hook, 1000 lb cap @ 15" LC	22 lbs
B18	18" boom with hook, 1000 lb cap @ 18" LC	24 lbs
B20	20" boom with hook, 1000 lb cap @ 20" LC	25 lbs
Mounts on fork models with shaft (ps) back plate.		
B20-15PS	20" boom with hook, 1500 lb cap @ 20" LC	35 lbs
B24-15PS	24" boom with hook, 1500 lb cap @ 24" LC	45 lbs



Boom with Hook



Slip-on Platform



Ram

## Stacker Options Description and Specification



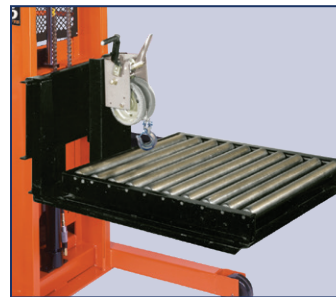
**Wheel Material:** Standard wheels are phenolic plastic. Optional materials available.



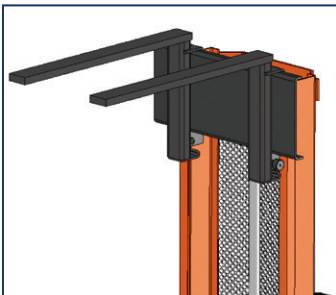
**Remote Control:** Hand or foot operated controls w/ coil cord. Factory installed. RC-10, RC-20, FC-10.



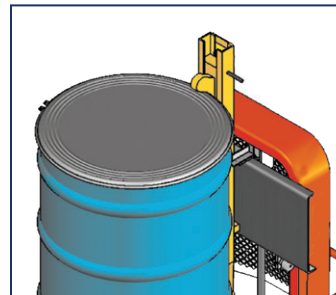
**Fifth Wheel:** Recommended for lifts with wide straddles or heavy load capacities. 8" polyurethane plastic wheel and spring loaded handle.



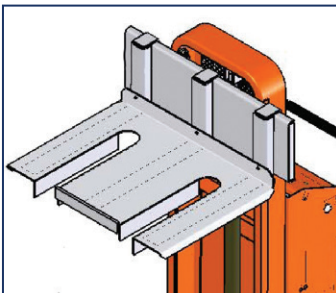
**P-6 Die Puller:** Equipped with a hand operated winch with cable and hook for pulling dies over a roller bed. 27 x 30" roller area mounted on a 32 x 30" slip-on platform. 1000 lb capacity, weight is 185 lbs. Requires 24" load center.



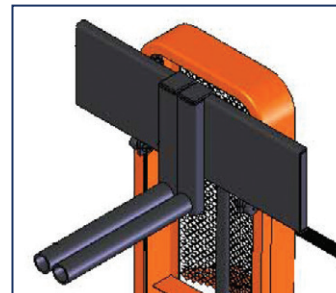
**Reversed (Inverted) Forks:** Ideal for overhead installation. Forks can be modified in a reverse position, giving an increased lowered/raised height.



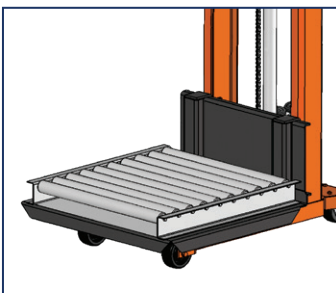
**DG-30 Drum Grabber:** Automatically grabs 30 or 55 gallon drums for handling and stacking in the vertical position. Mounts on the back plate of any straddle fork model stacker. Parrot-beak mechanism works with steel or fiber drums.



**Modified Platforms:** Customized for a specific applications, platform modifications include extended lengths or widths, cutouts, special shapes, floor level access, bridge plates, non-skid surfaces, and more.



**Extended Backplate:** Wider or higher backplates to accommodate special lifting requirements.



**R-5 Roller Bed:** Excellent for transferring heavy objects to and from a lift with minimum effort. Front or side loading. Rollers are on a 3" center. 27 x 30" area mounted on a 32 x 36" slip-on platform. 1000 lb capacity, weight is 145 lbs. Requires a 24" load center.

## Other Stacker Options

**Fire Resistant Hydraulic Fluid:** Water glycol fluids are fire resistant, non-explosive and non-toxic. Approved by Factory Mutual Insurance Engineering Laboratories.

**Height:** Standard lift heights can be decreased to meet special requirements.

**Air Power:** (In place of standard DC power unit). Air motor with hydraulic pump. 1.5 GPM at 80 PSI and 80 CFM of free air with lift fully loaded. Includes a hand or foot control valve (FRL not included.)

# Pallet Positioners

## P3 All-Around™ - Load Levelers

**Load and unload pallets without bending, stretching, or walking around the load.**

Automatically maintains pallets at a comfortable working height as layers of boxes are added or removed. Choose from pneumatic airbag or mechanical spring configurations.

**P3 All-Around Pneumatic Airbag** - Heavy-duty, reinforced rubber airbag handles loads up to 4500 lbs. The pneumatic option accommodates loads that vary substantially in weight - from 400 - 4500 lbs.

**P3 All-Around Spring** - Heavy-duty springs and shock absorbers lower or raise pallets as boxes are added or removed. Multiple spring configurations are available to accommodate loads from 400 - 4,500 lbs. Best used where load weights don't vary greatly

Turntable tops with easy turning anti-friction bearings to allow users to spin loads so they are always working from the near side without having to walk around the unit.



P3 All-Around Spring

### Features

- Automatically positions loads between 9-1/2" and 27-3/4" (28" for Spring unit)
- Small base allows workers to stand up close to the P3 at any position
- Stable design requires no floor lagging
- Built-in fork pockets for easy relocation
- Other finishes available

Model Number	Load Capacity	Raised Height	Lowered Height	Overall Base W x L	Turntable Diameter	Shipping Weight
<b>Pallet Positioner - Airbag</b>						
P3-AA	4500 lbs	27-3/4"	9-1/2"	36 x 36"	43-5/8"	450 lbs
<b>Pallet Positioner - Spring</b>						
P3-Spring	4500 lbs	28"	9-1/2"	36 x 36"	43-5/8"	410 lbs
P3-Spring-SST*	4500 lbs	28"	9-1/2"	36 x 36"	43-5/8"	410 lbs

\*Stainless Steel Construction



P3 All-Around Airbag



Stainless Steel

Pallet loads automatically lower or rise as boxes are added or removed.



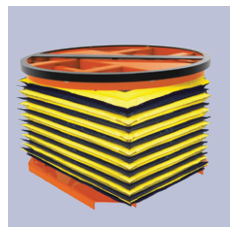
### P3 All-Around Options



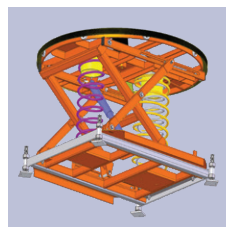
Solid steel top



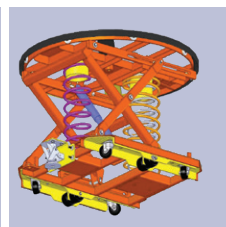
Square/Rectangular tops



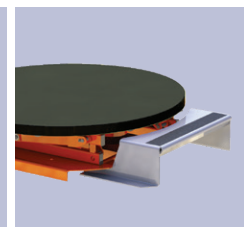
Bellows skirting



Leveling feet



Fork pocket caster kit



Access step

## P3 - Powered Pallet Positioner - Hydraulic

For when loads, weights, pallet sizes or product dimension vary greatly. As boxes are added or removed the user can adjust the turntable platform to the most comfortable height

### Features

- Foot control
- 115 volt power
- Turntable top with anti-friction bearings
- Built-in fork pockets for easy relocation

Model Number	Load Capacity	Raised Height	Lowered Height	Overall Base W x L	Turntable Diameter	Shipping Weight
<b>Powered Pallet Positioner</b>						
P3PH-24-20	2000 lbs	32-3/4"	8-3/4"	40 x 36"	43-5/8"	700 lbs
P3PH-24-40	4000 lbs	32-3/4"	8-3/4"	40 x 36"	43-5/8"	760 lbs



## Low Profile Lift Table

Collapsed heights as low as 3.25" and four-side load access make these units ideal for pallet loading and unloading. Available with integrated recessed turntable platforms and optional shallow ramps for loading and unloading with a hand pallet jack..

### Features

- Standard footswitch control
- Full perimeter toe guard
- Operates on standard 115V power

Model Number	Load Capacity	Raised Height	Lowered Height	Std. Base / Platform	Max Platform	Standard Motor	Std. Voltage Phase/Hz	Shipping Weight
<b>Standard Platform</b>								
LP34-22	2200 lbs	34-3/4"	3-1/4"	24" x 60"	48" x 96"	1 HP	115/1/60	600 lbs
<b>Recessed Turntable Platform</b>								
LP34-22-TNT	1950 lbs	35-5/8"	4-1/8"	48" x 66"	48" x 96"	1 HP	115/1/60	750 lbs



## U-Lift Roll-In Lift Tables

Unique platform cutouts allow these lifts to be fed with a hand pallet truck. Pallet truck forks **roll into** the platform while the pallet moves over the outside platform beams. Provides access to all four sides of the pallet. For use with open bottom pallets or skids only.

### Features

- Standard footswitch control
- Full perimeter toe guard
- Operates on standard 115V power

Model Number	Load Capacity	Raised Height	Lowered Height	Platform Size	Lifting Speed	Standard Motor	Std. Voltage Phase/Hz	Shipping Weight
UL34-22	2200 lbs	34-3/4"	3-1/4"	51 x 60 1/2"	22 sec	1 HP	115/1/60	700 lbs



For use with open bottom pallets only.

## Skid Lifters

For skids or open-bottom pallets. Can be used as a transporter or adjustable height workstation. Powered lifting via 12VDC (70 amp/hr battery with built in 110V 15A charger.

Model Number	Load Capacity	Raised Height	Lowered Height	Unit O.D.	Fork Length	Shipping Weight
<b>PSL Series - Electric Lift</b>						
PSL-22/20-E	2200 lbs	31-1/2"	3-1/2"	21-1/4"	44"	375 lbs
PSL-22/27-E	2200 lbs	31-1/2"	3-1/2"	27"	44"	375 lbs

# Floor-Level Lifts and Pallet Positioners

## Floor Level Lifts

These units can all be fed quickly and easily by inexpensive hand pallet trucks allowing workers to function at their own pace without having to wait for a fork lift and certified operator to load the lifts for them. With capacities up to 6,000 lbs. and multiple platform (pan) sizes, virtually any load can be accommodated.

### Features

- 35" vertical travel
- External 1 HP 115/1/60 power unit
- Optional power units available
- Foot or hand-held control
- 6" flexible safety toe guard
- Lifting eyes for safe positioning
- Custom designs available

Model Number	Load Capacity	Raised Height	Lowered Height	Platform Size	Dimensions W x L	Lifting Speed	Shipping Weight
<b>XZ44 Series</b>							
XZ44-20	2000 lbs	35-3/8"	3/8"	44 x 48"	61-1/4 x 59"	40 sec	1300 lbs
XZ44-40	4000 lbs	35-3/8"	3/8"	44 x 48"	61-1/4 x 59"	44 sec	1325 lbs
XZ44-60	6000 lbs	34-1/2"	1/2"	44 x 48"	65-1/4 x 59"	54 sec	1750 lbs
<b>XZ50 Series</b>							
XZ50-20	2000 lbs	35-3/8"	3/8"	50 x 48"	67-1/4 x 59"	40 sec	1400 lbs
XZ50-40	4000 lbs	35-3/8"	3/8"	50 x 48"	67-1/4 x 59"	44 sec	1425 lbs
XZ50-60	6000 lbs	34-1/2"	1/2"	50 x 48"	65-1/4 x 59"	54 sec	1850 lbs



Floor-Level Lifts



## P4 Floor-Level Loaders

Ideal for manual pallet loading and unloading applications. Extremely narrow side panels allow loads to be accessed with virtually no reachover. Footswitch controls allow the operator to precisely position the load at the most convenient and comfortable working height. Because it lowers to the floor it can be fed with a hand pallet truck.

### Features

- Internally mounted power unit
- Easily moved with a hand pallet jack
- Photoelectric toe guard
- 10 foot control cord pre-wired
- Footswitch or pendant control available
- Other voltages available
- Other platform sizes available

Model Number	Load Capacity	Raised Height	Lowered Height	Platform Size	Dimensions W x L	Lifting Speed	Std. Motor	Std. Voltage Phase/Hz	Shipping Weight
<b>P4 Series</b>									
P4-25-4448	2500 lbs	28"	3/8"	44 x 48"	51 x 61"	22 sec	1 HP	115/1/60	1485 lbs
P4-25-5248	2500 lbs	28"	3/8"	52 x 48"	59 x 61"	22 sec	1 HP	115/1/60	1620 lbs
P4-40-4448	4000 lbs	28"	3/8"	44 x 48"	51 x 61"	30 sec	1 HP	115/1/60	1650 lbs
P4-40-5248	4000 lbs	28"	3/8"	52 x 48"	59 x 61"	30 sec	1 HP	115/1/60	1800 lbs



P4 Floor-Level Loaders



## P4 Floor-Level Loader with Turntable

The P4 with built-in turntable rotates easily so workers can load/unload from one spot without having to reach across or walk around the pallet. Accepts a variety of pallet sizes.

The 31" ramp provides a gentle incline that facilitates loading with a hand pallet truck.

Model Number	Load Capacity	Raised Height	Lowered Height	Platform Size	Dimensions W x L	Lifting Speed	Std. Motor	Std. Voltage Phase/Hz	Shipping Weight
<b>P4 Series</b>									
P4-25-4348-LPT	2500 lbs	30"	2"	44 x 48"	106" x 51"	30 sec	1 HP	115/1/60	1400 lbs





## Post Lift Tables - Electromechanical

A simple, low-cost device for lifting, work positioning and transporting. Guide posts provide stability for the table top which is raised by a central cylinder. Hydraulic tables operate by foot pump. Electromechanical tables use a linear actuator powered by an onboard battery.

### Features

- 1000 - 3000 lb capacities
- Foot-operated hydraulic pump on P series
- 12V DC screw drive linear actuator with push-button control on BP series
- Foot-operated floor lock
- Integrated push/pull handle
- 2 fixed and 2 swivel casters with high-impact polyurethane wheels

Model Number	Load Capacity	Raised Height	Lowered Height	Platform Size	Shipping Weight
<b>BP Series - Battery-operated Tables</b>					
BP12-10	1000 lbs	37"	25"	24 x 36"	270 lbs
BP12-20	2000 lbs	37"	25"	24 x 36"	310 lbs
BP18-10	1000 lbs	52"	34"	24 x 36"	370 lbs
BP18-20	2000 lbs	52"	34"	24 x 36"	430 lbs



## Mechanical Post Lift Tables

Four self-locking acme screw posts put the table top at the desired height and hold it there with no drift, even under maximum load ( 2,000 lb.). Height is adjusted by hand crank. Two crank (high and low speed) studs are located on both ends of the table.

### Features

- 42" raised height
- Foot-operated floor lock
- 2 fixed and 2 swivel casters with high-impact polyurethane wheels

Model Number	Load Capacity	Raised Height	Lowered Height	Platform Size	Shipping Weight
<b>P Series</b>					
P2436	2000 lbs	42"	24"	24 x 36"	400 lbs
P3036	2000 lbs	42"	24"	30 x 36"	445 lbs



## Hydraulic Cantilever Tables

Foot operated hydraulic lifts have an open area between the base legs and table top which allows access to hard to reach machine beds and work areas. The two-stage telescoping lift mechanism has hardened steel rollers to provide smooth lifting and lowering.

### Features

- Dual floor locks
- Raised heights up to 60"
- Lowered heights down to 24"
- 2 fixed and 2 swivel casters with high-impact polyurethane wheels
- Tip-toe release for lowering

Model Number	Load Capacity	Raised Height	Lowered Height	Platform Size	Shipping Weight
<b>PL Series</b>					
PL36	2000 lbs	36"	24"	24 x 36"	315 lbs
PL48	2000 lbs	48"	30"	24 x 36"	330 lbs
PL60	2000 lbs	60"	36"	24 x 36"	350 lbs



Note: Post Lift styles may differ slightly from images shown. Specifications subject to change

# Light-Duty Scissor Lifts

## Light-Duty Manual Scissor Lifts

Designed and built for light-duty lifting and positioning tasks, these foot pump operated hydraulic scissor lifts offer a dependable, low-cost solution for intermittent duty cycles. Capacities up to 2,000 lbs. Platforms up to 48" x 72" are available.

### Features

- Hand-controlled release for lowering 1/2" steel plate scissor legs
- 2000 lb capacity models feature 3/4" thick steel scissor legs
- Wide-base models
- Oversized & custom platforms available
- Hinged platform allows easy access to cylinders
- Chrome-plated ram cylinders
- Custom designs available

Model Number	Load Capacity	Raised Height	Lowered Height	End/Side Capacity	Std. Base & Platform	Maximum Platform	Lifting Strokes	Shipping Weight
<b>XF24 Series</b>								
XF24-10	1000 lbs	29"	5-1/4"	1000 lbs	24 x 36"	36 x 42"	35	390 lbs
XF24-15	1500 lbs	29"	5-1/4"	1500 lbs	24 x 36"	36 x 42"	55	395 lbs
XF24-20	2000 lbs	31"	7-1/4"	2000 lbs	24 x 36"	48 x 60"	85	500 lbs
<b>XF36 Series</b>								
XF36-10	1000 lbs	41"	5-1/4"	1000 lbs	24 x 48"	36 x 54"	46	440 lbs
XF36-15	1500 lbs	41"	5-1/4"	1500 lbs	24 x 48"	36 x 54"	69	455 lbs
XF36-20	2000 lbs	43"	7-1/4"	2000 lbs	24 x 48"	48 x 72"	130	650 lbs
<b>WXF24 Series</b>								
WXF24-10	1000 lbs	29-1/4"	5-1/4"	1000 lbs	36 x 36"	48 x 42"	35	430 lbs
WXF24-15	1500 lbs	29-1/4"	5-1/4"	1500 lbs	36 x 36"	48 x 42"	55	435 lbs
<b>WXF36 Series</b>								
WXF36-10	1000 lbs	41-1/4"	5-1/4"	1000 lbs	36 x 48"	48 x 54"	46	480 lbs
WXF36-15	1500 lbs	41-1/4"	5-1/4"	1500 lbs	36 x 48"	48 x 54"	69	485 lbs



XF36-10

## Light-Duty Electric Scissor Lifts

A 1/3 HP electric motor adds the convenience of power lifting to this intermittent duty cycle hydraulic scissor lift. Capacities up to 1,500 lbs. Platforms up to 48" x 60" are available.

### Features

- Standard hand-control pendant
- Easy-to-service internal power unit
- 1/2" steel plate scissor legs
- Powered up, powered down units
- Hinged platform allows for easy access to cylinders
- Internal 1/3 HP 115/1/60 power unit
- Custom designs available



XS36-15

Model Number	Load Capacity	Raised Height	Lowered Height	End/Side Capacity	Std. Base & Platform	Maximum Platform	Lifting Speed	Shipping Weight
<b>XS24 Series - 24" Travel - 24" W x 36" L Platform</b>								
XS24-10	1000 lbs	29-1/4"	5-1/4"	1000 lbs	24 x 36"	36 x 48"	18 sec	390 lbs
XS24-15	1500 lbs	29-1/4"	5-1/4"	1500 lbs	24 x 36"	36 x 48"	23 sec	395 lbs
<b>XS36 Series - 36" Travel - 24" W x 48" L Platform</b>								
XS36-10	1000 lbs	41-1/4"	5-1/4"	1000 lbs	24 x 48"	36 x 60"	29 sec	425 lbs
XS36-15	1500 lbs	41-1/4"	5-1/4"	1500 lbs	24 x 48"	36 x 60"	36 sec	430 lbs
<b>WXS24 Series - 24" Travel - 36" W x 36" L Platform</b>								
WXS24-10	1000 lbs	29-1/4"	5-1/4"	1000 lbs	36 x 36"	48 x 48"	18 sec	430 lbs
WXS24-15	1500 lbs	29-1/4"	5-1/4"	1500 lbs	36 x 36"	48 x 48"	23 sec	435 lbs
<b>WXS36 Series - 36" Travel - 36" W x 48" L Platform</b>								
WXS36-10	1000 lbs	41-1/4"	5-1/4"	1000 lbs	36 x 48"	48 x 60"	29 sec	455 lbs
WXS36-15	1500 lbs	41-1/4"	5-1/4"	1500 lbs	36 x 48"	48 x 60"	36 sec	470 lbs



# Portable Scissor Lifts

## Portable Manual Scissor Lifts

Portable scissor lifts improve efficiency and safety. Use as portable workstations, feeding tables and load transporters. Capacities to 2,000 lbs. to heights to 45'-1/4".

### Features

- Hand-release for lowering
- Foot-operated hydraulic pump
- 1/2" steel plate scissor legs, 3/4" on XP24-20 and XP36-20
- Two fixed & two swivel 5" x 2" casters
- XP24-20 and XP36-20 have 6" casters
- Hinged platform cylinder access
- Foot-operated floor lock
- Oversized / custom platforms available
- Optional casters available
- Custom designs available



XP Series



WXP Series

Model Number	Load Capacity	Raised Height	Lowered Height	Standard Platform	Maximum Platform	Lifting Strokes	Shipping Weight
<b>XP24 Series - 23" Travel</b>							
XP24-600	600 lbs	33"	10"	20 x 32"	20 x 32"	25	260 lbs
<b>XP24 Series - 24" Travel</b>							
XP24-10	1000 lbs	33"	9-1/4"	24 x 36"	30 x 42"	35	410 lbs
XP24-15	1500 lbs	33"	9-1/4"	24 x 36"	30 x 42"	55	415 lbs
XP24-20	2000 lbs	41-1/2"	17-1/2"	24 x 36"	48 x 48"	85	750 lbs
<b>XP36 Series - 36" Travel</b>							
XP36-10	1000 lbs	45"	9-1/4"	24 x 48"	30 x 54"	46	440 lbs
XP36-15	1500 lbs	45"	9-1/4"	24 x 48"	30 x 54"	69	445 lbs
XP36-20	2000 lbs	53-1/2"	17-1/2"	24 x 48"	48 x 60"	130	860 lbs
<b>WXP24 Series - 24" Travel</b>							
WXP24-10	1000 lbs	33-1/4"	9-1/4"	36 x 36"	42 x 42"	35	450 lbs
WXP24-15	1500 lbs	33-1/4"	9-1/4"	36 x 36"	42 x 42"	55	455 lbs
<b>WXP36 Series - 36" Travel</b>							
WXP36-10	1000 lbs	45-1/4"	9-1/4"	36 x 48"	48 x 54"	65	480 lbs
WXP36-15	1500 lbs	45-1/4"	9-1/4"	36 x 48"	48 x 54"	69	485 lbs

## Portable Electric Scissor Lifts - Double Scissor Lifts

DC powered portable lifts controlled by a convenient hand pendant provide smooth lifting and lowering at the touch of button. Capacities up 2,000 lbs and lifting heights up to 36".

### Features

- 2 fixed, 2 swivel 5" x 2" casters,
- Easy-to-service internal power unit
- 1/2" steel plate scissor legs
- 12V AGM cell battery and built-in 5 charger
- Optional power units available
- Hinged platform cylinder / power unit access
- Foot-operated safety floor lock
- Powered up, powered down\*

### XBP & WBP Series



XBP Series

Model Number	Load Capacity	Raised Height	Lowered Height	End/Side Capacity	Std. Base & Platform	Maximum Platform	Lifting Speed	Shipping Weight
<b>XBP24 Series - 24" Travel - 24" W x 36" L Platform</b>								
XBP24-10	1000 lbs	33"	9-1/4"	1000 lbs	24 x 36"	30 x 42"	10 sec	470 lbs
XBP24-15	1500 lbs	33"	9-1/4"	1500 lbs	24 x 36"	30 x 42"	15 sec	475 lbs
XBP24-20	2000 lbs	41-1/2"	17-1/2"	2000 lbs	24 x 36"	48 x 48"	15 sec	700 lbs
<b>XBP36 Series - 36" Travel - 24" W x 48" L Platform</b>								
XBP36-10	1000 lbs	45"	9-1/4"	1000 lbs	24 x 48"	30 x 54"	14 sec	500 lbs
XBP36-15	1500 lbs	45"	9-1/4"	1500 lbs	24 x 48"	30 x 54"	20 sec	505 lbs
XBP36-20	2000 lbs	53-1/2"	17-1/2"	2000 lbs	24 x 48"	48 x 60"	22 sec	700 lbs
<b>WBP24 Series - 24" Travel - 36" W x 36" L Platform</b>								
WBP24-10	1000 lbs	33-1/4"	9-1/4"	1000 lbs	36 x 36"	42 x 42"	8 sec	590 lbs
WBP24-15	1500 lbs	33-1/4"	9-1/4"	1500 lbs	36 x 36"	42 x 42"	15 sec	610 lbs
<b>WBP36 Series - 36" Travel - 36" W x 48" L Platform</b>								
WBP36-10	1000 lbs	45-1/4"	9-1/4"	1000 lbs	36 x 48"	48 x 54"	14 sec	650 lbs
WBP36-15	1500 lbs	45-1/4"	9-1/4"	1500 lbs	36 x 48"	48 x 54"	20 sec	675 lbs

\*Gravity lowering on XBP-24-20, XBP-36-20 Models

### DBP Series



DBP Series

Model Number	Load Capacity	Raised Height	Lowered Height	Std. Base & Platform	Maximum Platform	Lifting Speed	Shipping Weight
<b>DBP30 Series - 30" Travel - 24" W x 24" L Platform</b>							
DBP30-10	1000 lbs	40-3/4"	10-3/4"	24 x 24"	30 x 30"	8 sec	470 lbs
<b>DBP36 Series - 36" Travel - 24" W x 36" L Platform</b>							
DBP36-10	1000 lbs	47-3/4"	11-3/4"	24 x 36"	30 x 42"	14 sec	505 lbs
DBP36-15	1500 lbs	47-3/4"	11-3/4"	24 x 36"	30 x 42"	20 sec	515 lbs
<b>DBP48 Series - 48" Travel - 24" W x 48" L Platform</b>							
DBP48-10	1000 lbs	59-3/4"	11-3/4"	24 x 48"	30 x 54"	43 sec	650 lbs
DBP48-15	1500 lbs	59-5/8"	11-5/8"	24 x 48"	30 x 54"	43 sec	700 lbs

\*Gravity lowering on DBP36-15, DBP48-10 & DBP48-15 Models

# Scissor Lift

## Standard-Duty Scissor Lifts

Maximize worker and machine productivity by positioning work at just the right level. Eliminate manual lifting, bending and reaching associated with a wide variety of tasks.

### Features

- Standard hand control pendant
- Optional foot control available
- Heavy-duty hydraulic cylinders with chrome-plated rams
- Polyurethane seals on cylinders
- 3/4" steel plate scissor legs
- Lifetime lubricated bearings
- Maintenance device
- Custom designs available
- Oversized platforms available



## Wide-Base Scissor Lifts

Wide base allows these lifts to be equipped with larger platforms but still maintain excellent stability.



Model Number	Load Capacity	Raised Height	Lowered Height	End/Side Capacity	Std. Base & Platform	Max Platform	Lifting Speed	Std. Motor	Std. Voltage/Phase/Hz	Shipping Weight
<b>XL24 Series - 24" Travel</b>										
XL24-20	2000 lbs	31"	7-1/4"	2000 lbs	24 x 36"	48 x 60"	15 sec	1 HP	115/1/60	550 lbs
XL24-40	4000 lbs	31"	7-1/4"	4000 lbs	24 x 36"	48 x 60"	27 sec	1 HP	115/1/60	570 lbs
XL24-60	6000 lbs	31"	7-1/4"	4500 lbs	24 x 36"	48 x 60"	40 sec	1 HP	115/1/60	620 lbs
<b>XL36 Series - 36" Travel</b>										
XL36-20	2000 lbs	43"	7-1/4"	2000 lbs	24 x 48"	48 x 72"	17 sec	1 HP	115/1/60	690 lbs
XL36-30	3000 lbs	43"	7-1/4"	3000 lbs	24 x 48"	48 x 72"	30 sec	1 HP	115/1/60	720 lbs
XL36-40	4000 lbs	43"	7-1/4"	3500 lbs	24 x 48"	48 x 72"	38 sec	1 HP	115/1/60	750 lbs
XL36-50	5000 lbs	43"	7-1/4"	3500 lbs	24 x 48"	48 x 72"	22 sec	1-1/2 HP	230, 460/3/60	770 lbs
XL36-60	6000 lbs	43"	7-1/4"	3500 lbs	24 x 48"	48 x 72"	30 sec	1-1/2 HP	230, 460/3/60	790 lbs
XL36-80	8000 lbs	45"	9"	4000 lbs	30 x 60"	54 x 84"	21 sec	3 HP	230, 460/3/60	1350 lbs
<b>XL48 Series - 48" Travel</b>										
XL48-20	2000 lbs	55"	7-1/4"	2000 lbs	24 x 64"	48 x 88"	19 sec	1-1/2 HP	230, 460/3/60	850 lbs
XL48-40	4000 lbs	55"	7-1/4"	3500 lbs	24 x 64"	48 x 88"	32 sec	1-1/2 HP	230, 460/3/60	900 lbs
XL48-60	6000 lbs	55"	7-1/4"	3500 lbs	24 x 64"	48 x 88"	39 sec	1-1/2 HP	230, 460/3/60	950 lbs
XL48-80	8000 lbs	57"	9"	4000 lbs	24 x 66"	48 x 96"	30 sec	3 HP	230, 460/3/60	1350 lbs
<b>XL60 Series - 60" Travel</b>										
XL60-20	2000 lbs	70"	10"	1000 lbs	24 x 86"	48 x 120"	10 sec	3 HP	230, 460/3/60	1300 lbs
XL60-40	4000 lbs	70"	10"	2000 lbs	24 x 86"	48 x 120"	20 sec	3 HP	230, 460/3/60	1375 lbs
XL60-60	6000 lbs	70"	10"	3000 lbs	24 x 86"	48 x 120"	30 sec	3 HP	230, 460/3/60	1450 lbs
XL60-80	8000 lbs	70"	10"	4000 lbs	24 x 86"	48 x 120"	42 sec	3 HP	230, 460/3/60	1700 lbs

Please specify voltage and control type when ordering.

Model Number	Load Capacity	Raised Height	Lowered Height	End/Side Capacity	Std. Base & Platform	Max Platform	Lifting Speed	Std. Motor	Std. Voltage/Phase/Hz	Shipping Weight
<b>X3W Series - 24" Travel</b>										
X3W24-20	2000 lbs	31"	7-3/4"	2000 lbs	36 x 36"	60 x 60"	30 sec	1 HP	115/1/60	720 lbs
X3W24-40	4000 lbs	31"	7-3/4"	4000 lbs	36 x 36"	60 x 60"	32 sec	1 HP	115/1/60	740 lbs
X3W24-60	6000 lbs	31"	7-3/4"	4500 lbs	36 x 36"	60 x 60"	34 sec	1 HP	115/1/60	790 lbs
<b>X3W Series - 36" Travel</b>										
X3W36-20	2000 lbs	43"	7-3/4"	2000 lbs	36 x 48"	60 x 72"	44 sec	1 HP	115/1/60	860 lbs
X3W36-40	4000 lbs	43"	7-3/4"	3500 lbs	36 x 48"	60 x 72"	46 sec	1 HP	115/1/60	900 lbs
X3W36-60	6000 lbs	43"	7-3/4"	3500 lbs	36 x 48"	60 x 72"	26 sec	1-1/2 HP	230, 460/3/60	960 lbs
<b>X3W Series - 48" Travel</b>										
X3W48-20	2000 lbs	55"	7-3/4"	2000 lbs	36 x 64"	60 x 88"	32 sec	1-1/2 HP	230, 460/3/60	1020 lbs
X3W48-40	4000 lbs	55"	7-3/4"	3500 lbs	36 x 64"	60 x 88"	34 sec	1-1/2 HP	230, 460/3/60	1070 lbs
X3W48-60	6000 lbs	55"	7-3/4"	3500 lbs	36 x 64"	60 x 88"	38 sec	1-1/2 HP	230, 460/3/60	1120 lbs
<b>X4W Series - 24" Travel</b>										
X4W24-20	2000 lbs	31"	7-3/4"	2000 lbs	48 x 36"	72 x 60"	30 sec	1 HP	115/1/60	810 lbs
X4W24-40	4000 lbs	31"	7-3/4"	4000 lbs	48 x 36"	72 x 60"	32 sec	1 HP	115/1/60	830 lbs
X4W24-60	6000 lbs	31"	7-3/4"	4500 lbs	48 x 36"	72 x 60"	34 sec	1 HP	115/1/60	880 lbs
<b>X4W Series - 36" Travel</b>										
X4W36-20	2000 lbs	43"	7-3/4"	2000 lbs	48 x 48"	72 x 72"	44 sec	1 HP	115/1/60	950 lbs
X4W36-40	4000 lbs	43"	7-3/4"	3500 lbs	48 x 48"	72 x 72"	46 sec	1 HP	115/1/60	990 lbs
X4W36-60	6000 lbs	43"	7-3/4"	3500 lbs	48 x 48"	72 x 72"	26 sec	1-1/2 HP	230, 460/3/60	1050 lbs
<b>X4W Series - 48" Travel</b>										
X4W48-20	2000 lbs	55"	7-3/4"	2000 lbs	48 x 64"	72 x 88"	32 sec	1-1/2 HP	230, 460/3/60	1110 lbs
X4W48-40	4000 lbs	55"	7-3/4"	3500 lbs	48 x 64"	72 x 88"	30 sec	1-1/2 HP	230, 460/3/60	1160 lbs
X4W48-60	6000 lbs	55"	7-3/4"	3500 lbs	48 x 64"	72 x 88"	38 sec	1-1/2 HP	230, 460/3/60	1250 lbs
X4W48-80	8000 lbs	57"	9"	4000 lbs	48 x 66"	72 x 88"	30 sec	3 HP	230, 460/3/60	1550 lbs
<b>X4.5W Series - 60" Travel</b>										
X4.5W60-20	2000 lbs	70"	10"	1000 lbs	54 x 86"	84 x 120"	10 sec	3 HP	230, 460/3/60	1650 lbs
X4.5W60-40	4000 lbs	70"	10"	2000 lbs	54 x 86"	84 x 120"	20 sec	3 HP	230, 460/3/60	1725 lbs
X4.5W60-60	6000 lbs	70"	10"	3000 lbs	54 x 86"	84 x 120"	30 sec	3 HP	230, 460/3/60	1800 lbs
X4.5W60-80	8000 lbs	70"	10"	4000 lbs	54 x 86"	84 x 120"	42 sec	3 HP	230, 460/3/60	2150 lbs

# Tandem and Dual Scissor Lifts

## Tandem Scissor Lifts



Tandem lift tables are perfect for handling long loads such as pipes, sheets, bar stock, lumber and large assemblies. Platforms with sizes up to 4' x 17' provide smooth, level lifting and lowering of loads up to 12,000 lbs.

### Features

- Upper travel limit switch
- Lifting eyes
- Other platform sizes and capacities available



Model Number	Load Capacity	Raised Height	Lowered Height	Std. Base & Platform	Maximum Platform	Lifting Speed	Standard Motor	Std. Voltage/Phase/Hz	Shipping Weight
<b>XL36T Series - 36" Travel</b>									
XL36T-40	4000 lbs	43"	7-1/4"	24 x 96"	48 x 120"	34 sec	1 HP	115/1/60	1280 lbs
XL36T-80	8000 lbs	43"	7-1/4"	24 x 96"	48 x 120"	44 sec	1-1/2 HP	230, 460/3/60	1340 lbs
XL36T-120	12000 lbs	43"	7-1/4"	24 x 96"	48 x 120"	60 sec	1-1/2 HP	230, 460/3/60	1400 lbs
<b>XL48T Series - 48" Travel</b>									
XL48T-40	4000 lbs	55"	7-1/4"	24 x 128"	48 x 168"	28 sec	1-1/2 HP	230, 460/3/60	1600 lbs
XL48T-80	8000 lbs	55"	7-1/4"	24 x 128"	48 x 168"	64 sec	1-1/2 HP	230, 460/3/60	1700 lbs
XL48T-120	12000 lbs	55"	7-1/4"	24 x 128"	48 x 168"	78 sec	1-1/2 HP	230, 460/3/60	1800 lbs
<b>XL60T Series - 60" Travel</b>									
XL60T-40	4000 lbs	70"	10"	24 x 172"	48 x 204"	20 sec	3 HP	230, 460/3/60	2500 lbs
XL60T-80	8000 lbs	70"	10"	24 x 172"	48 x 204"	40 sec	3 HP	230, 460/3/60	2650 lbs
XL60T-120	12000 lbs	70"	10"	24 x 172"	48 x 204"	60 sec	3 HP	230, 460/3/60	2750 lbs

Application information must be reviewed, approval drawings will be provided.

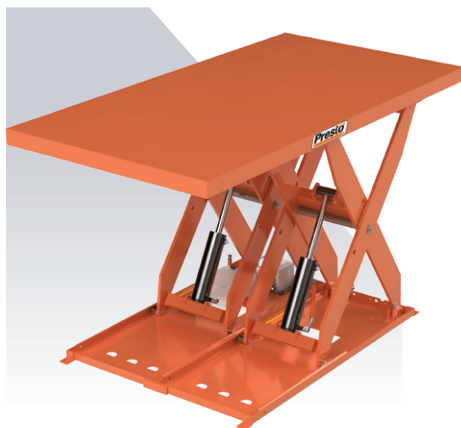
## Wide Base Tandem Scissor Lifts

For extremely large loads, wide-base tandem scissor lifts can be equipped with platforms as large as 7' x 17' and have capacities up to 12,000 lbs.



Model Number	Load Capacity	Raised Height	Lowered Height	Std. Base & Platform	Maximum Platform	Lifting Speed	Standard Motor	Std. Voltage/Phase/Hz	Shipping Weight
<b>X3W36T Series - 36" Travel</b>									
X3W36T-40	4000 lbs	43"	7-3/4"	36 x 96"	60 x 120"	48 sec	1-1/2 HP	230, 460/3/60	1620 lbs
X3W36T-80	8000 lbs	43"	7-3/4"	36 x 96"	60 x 120"	50 sec	1-1/2 HP	230, 460/3/60	1700 lbs
X3W36T-120	12000 lbs	43"	7-3/4"	36 x 96"	60 x 120"	52 sec	1-1/2 HP	230, 460/3/60	1820 lbs
<b>X4W48T Series - 48" Travel</b>									
X4W48T-40	4000 lbs	55"	7-3/4"	48 x 128"	72 x 168"	64 sec	1-1/2 HP	230, 460/3/60	2120 lbs
X4W48T-80	8000 lbs	55"	7-3/4"	48 x 128"	72 x 168"	68 sec	1-1/2 HP	230, 460/3/60	2220 lbs
X4W48T-120	12000 lbs	55"	7-3/4"	48 x 128"	72 x 168"	76 sec	1-1/2 HP	230, 460/3/60	2400 lbs
<b>X4.5W60T Series - 60" Travel</b>									
X4.5W60T-40	4000 lbs	70"	10"	54 x 172"	84 x 204"	20 sec	3 HP	230, 460/3/60	3200 lbs
X4.5W60T-80	8000 lbs	70"	10"	54 x 172"	84 x 204"	40 sec	3 HP	230, 460/3/60	3350 lbs
X4.5W60T-120	12000 lbs	70"	10"	54 x 172"	84 x 204"	60 sec	3 HP	230, 460/3/60	3500 lbs

## Dual Scissor Lifts



Model Number	Load Capacity	Raised Height	Lowered Height	Std. Base & Platform	Maximum Platform	Lifting Speed	Standard Motor	Std. Voltage/Phase/Hz	Shipping Weight
<b>XL36D Series - 36" Travel</b>									
XL36D-40	4000 lbs	43"	7-1/4"	48 x 48"	72 x 72"	34 sec	1 HP	115/1/60	1280 lbs
XL36D-80	8000 lbs	43"	7-1/4"	48 x 48"	72 x 72"	44 sec	1-1/2 HP	230, 460/3/60	1340 lbs
XL36D-120	12000 lbs	43"	7-1/4"	48 x 48"	72 x 72"	60 sec	1-1/2 HP	230, 460/3/60	1400 lbs
<b>XL48D Series - 48" Travel</b>									
XL48D-40	4000 lbs	55"	7-1/4"	48 x 64"	72 x 96"	64 sec	1-1/2 HP	230, 460/3/60	1600 lbs
XL48D-80	8000 lbs	55"	7-1/4"	48 x 64"	72 x 96"	72 sec	1-1/2 HP	230, 460/3/60	1700 lbs
XL48D-120	12000 lbs	55"	7-1/4"	48 x 64"	72 x 96"	78 sec	1-1/2 HP	230, 460/3/60	1800 lbs
<b>XL60D Series - 60" Travel</b>									
XL60D-40	4000 lbs	70"	10"	48 x 86"	72 x 120"	20 sec	3 HP	230, 460/3/60	2500 lbs
XL60D-80	8000 lbs	70"	10"	48 x 86"	72 x 120"	40 sec	3 HP	230, 460/3/60	2650 lbs
XL60D-120	12000 lbs	70"	10"	48 x 86"	72 x 120"	60 sec	3 HP	230, 460/3/60	2750 lbs

# Scissor Lifts

## Heavy-Duty Hydraulic Scissor Lift Tables

### ECOA HH Series

ECOA HH Heavy Duty Series Lift Tables offer capacities of 8,000 to 12,000 lbs., travel distances from 36 to 60 in. and platform sizes up to 48 x 102 in. Designed and constructed for heavy-duty applications under the toughest working conditions, offering years of trouble-free operation.

#### Features

- Internally-mounted 3HP, 208/230/460V, 3PH, 60Hz, continuous-duty rated motor
- 24V operating control voltage
- Push-button pendant control - foot control switch available
- Safety maintenance bars



Vertical Travel (in)	Model Number	Capacity (lbs.)	End/Side Capacity (lbs.)	Standard Platform (in)	Max Platform (in)	Base (in. approx.)	Low Height (in)	Raised Height (in)	Lifting Speed (sec.)	Motor (HP)	Ship Weight (lbs.)
36	HH-080-36	8000	7000	36 x 48	48 x 72	36 x 48	9¼	45	20	3	1120
36	HH-100-36	10000	7000	36 x 48	48 x 72	36 x 48	9¼	45	23	3	1245
36	HH-120-36	12000	7000	36 x 48	48 x 72	36 x 48	9¼	45	30	3	1350
48	HH-080-48	8000	7000	36 x 64	48 x 88	36 x 64	9¼	57	23	3	1400
48	HH-100-48	10000	7000	36 x 64	48 x 88	36 x 64	9¼	57	35	3	1600
48	HH-120-48	12000	7000	36 x 64	48 x 88	36 x 64	9¼	57	45	3	1800
60	HH-080-60	8000	7000	36 x 84	48 x 102	36 x 84	10	70	40	3	1700
60	HH-100-60	10000	7000	36 x 84	48 x 102	36 x 84	10	70	45	3	1950
60	HH-120-60	12000	7000	36 x 84	48 x 102	36 x 84	10	70	60	3	2200

## Compact/Double Scissor Lift Tables

### ECOA CLT Series

Heavy-duty scissor lifts with small platforms and high travel. Load capacities are 2,000 to 6,000 lbs., travel distances of 36 to 48 in., with platform sizes up to 7 feet long.

#### Features

- Base and platform rollers are retained inside the channel frames
- 24V operating control voltage
- 3/4HP, 115/230V, 1PH, 60Hz or 208/230/460V, 3PH, 60Hz motor
- Cylinders with internal stops
- Push-button pendant control - foot control switch available
- Lifetime self-lubricating, PTFE lined, composite bearings
- Safety maintenance bars



Vertical Travel (in)	Model Number	Capacity (lbs)	End/Side Capacity (lbs.)	Standard Platform (lbs.)	Max Platform (in)	Base (in)	Low Height (in)	Raised Height (in)	Lifting Speed (sec.)	Motor (HP)	Ship Weight (lbs)
<b>Short Frame (S-Series) Models with Externally Mounted Power Units</b>											
36	CLT-02-36-S	2000	1000	24 x 36	48 x 72	22½ x 35	8½	44½	15	¾	600
36	CLT-03-36-S	3000	1500	24 x 36	48 x 72	22½ x 35	8½	44½	30	¾	650
36	CLT-04-36-S	4000	2000	24 x 36	48 x 72	22½ x 35	8½	44½	30	¾	700
36	CLT-05-36-S	5000	2500	24 x 36	48 x 72	22½ x 35	8½	44½	40	¾	750
36	CLT-06-36-S	6000	3000	24 x 36	48 x 72	22½ x 35	8½	44½	40	¾	775
48	CLT-02-48-S	2000	1000	24 x 48	48 x 84	22½ x 44	8½	56½	20	¾	650
48	CLT-03-48-S	3000	1500	24 x 48	48 x 84	22½ x 44	8½	56½	35	¾	700
48	CLT-04-48-S	4000	2000	24 x 48	48 x 84	22½ x 44	8½	56½	35	¾	725
48	CLT-05-48-S	5000	2500	24 x 48	48 x 84	22½ x 44	8½	56½	80	¾	800
48	CLT-06-48-S	6000	3000	24 x 48	48 x 84	22½ x 44	8½	56½	80	¾	825
<b>Long Frame (L-Series) Models with Internally Mounted Power Units</b>											
36	CLT-02-36-L	2000	1000	24 x 48	48 x 72	22½ x 47	8½	44½	15	¾	650
36	CLT-03-36-L	3000	1500	24 x 48	48 x 72	22½ x 47	8½	44½	30	¾	700
36	CLT-04-36-L	4000	2000	24 x 48	48 x 72	22½ x 47	8½	44½	30	¾	725
36	CLT-05-36-L	5000	2500	24 x 48	48 x 72	22½ x 47	8½	44½	40	¾	800
36	CLT-06-36-L	6000	3000	24 x 48	48 x 72	22½ x 47	8½	44½	40	¾	825
48	CLT-02-48-L	2000	1000	24 x 60	48 x 84	22½ x 56	8½	56½	20	¾	700
48	CLT-03-48-L	3000	1500	24 x 60	48 x 84	22½ x 56	8½	56½	35	¾	750
48	CLT-04-48-L	4000	2000	24 x 60	48 x 84	22½ x 56	8½	56½	35	¾	775
48	CLT-05-48-L	5000	2500	24 x 60	48 x 84	22½ x 56	8½	56½	80	¾	850
48	CLT-06-48-L	6000	3000	24 x 60	48 x 84	22½ x 56	8½	56½	80	¾	875

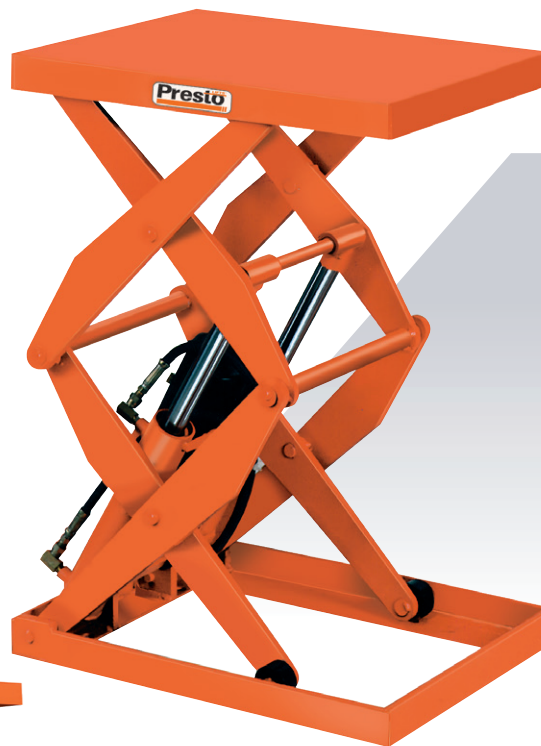
# Compact/Double Scissor Lifts

## Compact/Double Scissor Lifts

A double scissor lift mechanism allows for compact footprint while achieving optimum vertical travel (up to 72") Capacities up to 4,000 lbs and platforms up to 54" x 72".

### Features

- Standard hand pendant control
- Optional power units available
- DXS36-20 is available with a minimum base/platform size of 18 x 32" (requires optional remote power unit)
- DXS30 features power up, power down cylinders
- All other models are power up, gravity down
- Hinged platform for access to cylinders and power unit in the collapsed position
- Custom designs available
- For higher vertical travel and greater capacity, contact Sales



Model Number	Load Capacity	Raised Height	Lowered Height	Std. Base & Platform	Maximum Platform	Rise Time	Standard Motor	Std. Voltage/Phase/Hz	Shipping Weight
<b>DXS30 Series - 30" Travel</b>									
DXS30-5	500 lbs	36-3/4"	6-3/4"	16 x 24"	30 x 36"	16 sec	1/3 HP	115/1/60	350 lbs
DXS30-10	1000 lbs	36-3/4"	6-3/4"	16 x 24"	30 x 36"	18 sec	1/3 HP	115/1/60	360 lbs
<b>DXS36 Series - 36" Travel</b>									
DXS36-10	1000 lbs	43-1/2"	7-1/2"	24 x 36"	36 x 48"	40 sec	1/2 HP	115/1/60	460 lbs
DXS36-15	1500 lbs	43-1/2"	7-1/2"	24 x 36"	36 x 48"	42 sec	1/2 HP	115/1/60	480 lbs
DXS36-20	2000 lbs	44-1/4"	6"	18 x 42"	36 x 54"	40 sec	1/2 HP	115/1/60	550 lbs
<b>DXS48 Series - 48" Travel</b>									
DXS48-10	1000 lbs	55-1/2"	7-1/2"	24 x 48"	36 x 60"	50 sec	1/2 HP	115/1/60	600 lbs
DXS48-15	1500 lbs	55-1/2"	7-1/2"	24 x 48"	36 x 60"	54 sec	1/2 HP	115/1/60	650 lbs
DXS48-20	2000 lbs	57-1/2"	9-1/2"	24 x 40"	36 x 54"	42 sec	1 HP	115/1/60	800 lbs
DXS48-40	4000 lbs	60"	12"	30 x 42"	48 x 60"	16 sec	3 HP	230, 460/3/60	1250 lbs
<b>DXS60/64 Series - 64"/60" Travel</b>									
DXS64-25	2500 lbs	76-1/2"	12-1/2"	24 x 53"	42 x 66"	16 sec	3 HP	230, 460/3/60	1100 lbs
DXS60-50	5000 lbs	74"	14"	30 x 53"	48 x 66"	30 sec	3 HP	230, 460/3/60	1800 lbs
<b>DXS72 Series - 72" Travel</b>									
DXS72-20	2000 lbs	84-1/2"	12-1/2"	20 x 53"	36 x 66"	92 sec	1 HP	115/1/60	1250 lbs
DXS72-50	5000 lbs	86"	14"	32 x 57"	54 x 72"	36 sec	3 HP	230, 460/3/60	2000 lbs

# Super Heavy-Duty Lifts

## ECO A MLT Series Lift Tables

High-capacity, super heavy-duty scissor lifts with capacities of 15,000 to 30,000 lbs., with travel distances of 30 to 72 in. and platform sizes of 48 x 60 in. to 72 x 132 in. or platform sizes to fit your application.

## ECO A MLTDW Series Double-Wide Lift Tables

ECO A MLTDW Series Lift Tables are double-wide, high-capacity, heavy-duty scissor lifts with capacities of 25,000 to 60,000 lbs., travel distances of 30 to 72 in. with platform sizes of 96 x 60 in. to 120 x 132 in. or platform sizes to fit your application.

## Features

- Externally-mounted power unit
- 24V operating control voltage
- Push-button pendant control - foot control switch available
- Upper travel limit switch plus 8 mechanical back-up stops
- Rectangular structural tube scissor legs and torque tubes for maximum stability and minimal deflection
- Dual safety restraint maintenance bars
- Cylinder rod end protectors
- Flow limiter valve at cylinder bases
- Double wire braid pressure hoses



## MLT Series

Vertical Travel (in)	Model Number	Capacity (lbs.)	End/Side Capacity (lbs.)	Standard Platform (in)	Max Platform (in)	Base (in)	Low Height (in)	Raised Height (in)	Lifting Speed (sec.)	Motor (HP)	Ship Weight (lbs)
36	MLT-15-36	15000	12000	48 x 60	72 x 84	48 x 60	16	52	30	5	3500
36	MLT-20-36	20000	16000	48 x 60	72 x 84	48 x 60	20	56	30	5	3700
36	MLT-25-36	25000	24000	48 x 60	72 x 84	48 x 60	20	56	40	5	3800
36	MLT-30-36	30000	24000	48 x 60	72 x 84	48 x 60	20	56	40	5	3900
48	MLT-15-48	15000	12000	48 x 72	72 x 96	48 x 72	16	64	30	5	3700
48	MLT-20-48	20000	16000	48 x 72	72 x 96	48 x 72	20	68	30	5	4100
48	MLT-25-48	25000	24000	48 x 72	72 x 96	48 x 72	20	68	40	5	4200
48	MLT-30-48	30000	24000	48 x 72	72 x 96	48 x 72	20	68	40	5	4400
60	MLT-15-60	15000	12000	48 x 84	72 x 108	48 x 84	16	76	45	5	4000
60	MLT-20-60	20000	16000	48 x 84	72 x 108	48 x 84	20	80	45	5	4300
60	MLT-25-60	25000	24000	48 x 84	72 x 108	48 x 84	20	80	60	5	4400
60	MLT-30-60	30000	24000	48 x 84	72 x 108	48 x 84	20	80	60	5	4600
72	MLT-15-72	15000	12000	48 x 108	72 x 132	48 x 108	16	88	45	5	4800
72	MLT-20-72	20000	16000	48 x 108	72 x 132	48 x 108	20	92	45	5	5000
72	MLT-25-72	25000	24000	48 x 108	72 x 132	48 x 108	20	92	60	5	5100
72	MLT-30-72	30000	24000	48 x 108	72 x 132	48 x 108	20	92	60	5	5200

## MLTDW Double-Wide Series

Vertical Travel (in)	Model Number	Capacity (lbs.)	End/Side Capacity (lbs.)	Standard Platform (in)	Max Platform (in)	Base (in)	Low Height (in)	Raised Height (in)	Lifting Speed (sec.)	Motor (HP)	Ship Weight (lbs)
36	MLTDW-30-36	30000	24000	96 x 60	120 x 84	96 x 60	16	52	32	5	7200
36	MLTDW-40-36	40000	32000	96 x 60	120 x 84	96 x 60	20	56	55	5	7500
36	MLTDW-60-36	60000	48000	96 x 60	120 x 84	96 x 60	20	56	75	5	7800
48	MLTDW-30-48	30000	24000	96 x 72	120 x 96	96 x 72	16	64	30	5	7500
48	MLTDW-40-48	40000	32000	96 x 72	120 x 96	96 x 72	20	68	55	5	8100
48	MLTDW-60-48	60000	48000	96 x 72	120 x 96	96 x 72	20	68	75	5	8600
60	MLTDW-30-60	30000	24000	96 x 84	120 x 108	96 x 84	16	76	45	5	8000
60	MLTDW-40-60	40000	32000	96 x 84	120 x 108	96 x 84	20	80	80	5	8400
60	MLTDW-60-60	60000	48000	96 x 84	120 x 108	96 x 84	20	80	100	7½	9000
72	MLTDW-30-72	30000	24000	96 x 108	120 x 132	96 x 108	16	88	45	5	9700
72	MLTDW-40-72	40000	32000	96 x 108	120 x 132	96 x 108	20	92	80	5	10000
72	MLTDW-60-72	60000	48000	96 x 108	120 x 132	96 x 108	20	92	100	7½	10400

# Super Heavy-Duty Lifts

## MLTDL Series Double-Long Lift Tables

MLTDL Series Lift Tables are double long, high-capacity, heavy-duty scissor lifts with capacities of 25,000 to 60,000 lbs., travel distances of 30 to 72 in. and platform sizes of 48 x 120 in. to 72 x 264 in. Other platform sizes available.

## MLTQD Series Quad Lift Tables

MLTQD Series Lift Tables take heavy-duty lifting to another level of capability. These extra heavy-duty scissor lifts utilize four scissor mechanisms to achieve lifting capacities of 50,000 to 120,000 lbs. Lifting heights of 30 to 72 in. and platform sizes of 96 x 120 in. to 120 x 264 in. are available.



MLTDL Double-Long Series

## Features

- Externally-mounted power unit
- 24V operating control voltage
- Push-button pendant control - foot control switch available
- Upper travel limit switch plus 8 mechanical back-up stops
- Rectangular structural tube scissor legs and torque tubes for maximum stability and minimal deflection
- Dual safety restraint maintenance bars
- Cylinder rod end protectors
- Flow limiter valve at cylinder bases
- Double wire braid pressure hoses



MLTQD Quad Series  
Double-Wide/Double-Long

## MLTDL Double-Long Series

Vertical Travel (in)	Model Number	Capacity (lbs.)	End/Side Capacity (lbs)	Standard Platform (in)	Max Platform (in)	Base (in)	Low Height (in)	Raised Height (in)	Lifting Speed (sec.)	Motor (HP)	Ship Weight (lbs.)
36	MLTDL-30-36	30000	22500	48 x 120	72 x 168	48 x 120	16	52	32	5	7200
36	MLTDL-40-36	40000	30000	48 x 120	72 x 168	48 x 120	20	56	55	5	7500
36	MLTDL-60-36	60000	48000	48 x 120	72 x 168	48 x 120	20	56	75	5	7800
48	MLTDL-30-48	30000	22500	48 x 144	72 x 192	48 x 144	16	64	30	5	7500
48	MLTDL-40-48	40000	30000	48 x 144	72 x 192	48 x 144	20	68	55	5	8100
48	MLTDL-60-48	60000	48000	48 x 144	72 x 192	48 x 144	20	68	75	5	8600
60	MLTDL-30-60	30000	22500	48 x 168	72 x 216	48 x 168	16	76	45	5	8000
60	MLTDL-40-60	40000	30000	48 x 168	72 x 216	48 x 168	20	80	80	5	8400
60	MLTDL-60-60	60000	48000	48 x 168	72 x 216	48 x 168	20	80	100	7½	9000
72	MLTDL-30-72	30000	22500	48 x 216	72 x 264	48 x 216	16	88	45	5	9700
72	MLTDL-40-72	40000	30000	48 x 216	72 x 264	48 x 216	20	92	80	5	10000
72	MLTDL-60-72	60000	48000	48 x 216	72 x 264	48 x 216	20	92	100	7½	10400

## MLTQD Quad Series - Double-Wide/Double-Long

Vertical Travel (in)	Model Number	Capacity (lbs.)	End/Side Capacity (lbs)	Standard Platform (in)	Max Platform (in)	Base (in)	Low Height (in)	Raised Height (in)	Lifting Speed (sec.)	Motor (HP)	Ship Weight (lbs.)
36	MLTQD-80-36	80000	64000	96 x 120	120 x 168	96 x 120	20	56	80	10	15000
36	MLTQD-120-36	120000	96000	96 x 120	120 x 168	96 x 120	20	56	110	10	15600
48	MLTQD-80-48	80000	64000	96 x 144	120 x 192	96 x 144	20	68	80	10	16200
48	MLTQD-120-48	120000	96000	96 x 144	120 x 192	96 x 144	20	68	110	10	17200
60	MLTQD-80-60	80000	64000	96 x 168	120 x 216	96 x 168	20	80	120	10	16800
60	MLTQD-120-60	120000	96000	96 x 168	120 x 216	96 x 168	20	80	120	15	18000
72	MLTQD-80-72	80000	64000	96 x 216	120 x 264	96 x 216	20	92	120	10	20000
72	MLTQD-120-72	120000	96000	96 x 216	120 x 264	96 x 216	20	92	120	15	20800

# Extended Vertical Travel Lifts

## Extended Vertical Travel Scissor Lifts

### ECOA DSL, TSL, QSL Series Scissor Lifts

High-travel, double, triple, and quad scissor lifts designed and constructed for heavy-duty applications that require extended vertical travel. Capacities from 2,000 to 6,000 lbs. with lift heights from 70" up to 356".

#### Features

- Rectangular structural tube scissor legs and torque tubes for maximum stability and minimal deflection
- Pendant control with 20 ft. coil cord - foot control switch available
- All controller components are UL and/or CSA approved
- 24V operating control voltage
- Hydraulic flow limiter valve at the base of each cylinder
- Optional upper travel limit switch
- Mechanical upper travel stops
- Safety restraint maintenance bars

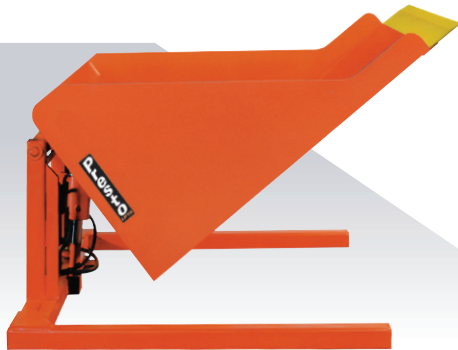


Vertical Travel (in)	Model Number	Capacity (lbs.)	End/Side Capacity (lbs)	Standard Platform (in.)	Max Platform (in)	Base (in)	Low Height (in)	Raised Height (in)	Motor (HP)	Ship Weight (lbs.)
<b>DSL Series Double Scissor Lift Tables</b>										
60	DSL-20-060	2000	1000	30 x 48	48 x 72	30 x 48	10¼	70	3	1500
60	DSL-40-060	4000	2000	30 x 48	48 x 72	30 x 48	11¼	72	3	1800
60	DSL-60-060	6000	3000	30 x 48	48 x 72	30 x 48	13¼	73	3	1900
72	DSL-20-072	2000	1000	30 x 60	48 x 84	30 x 60	10¼	82	3	1600
72	DSL-40-072	4000	2000	30 x 60	48 x 84	30 x 60	11¼	84	3	1875
72	DSL-60-072	6000	3000	30 x 60	48 x 84	30 x 60	13¼	85	3	2000
90	DSL-20-090	2000	1000	48 x 72	60 x 96	48 x 72	14	104	3	1900
90	DSL-40-090	4000	2000	48 x 72	60 x 96	48 x 72	14	104	5	2050
90	DSL-60-090	6000	3000	48 x 72	60 x 96	48 x 72	16	106	5	2350
108	DSL-20-108	2000	1000	54 x 84	72 x 108	54 x 84	14	122	5	2700
108	DSL-40-108	4000	2000	54 x 84	72 x 108	54 x 84	14	122	5	3100
108	DSL-60-108	6000	3000	54 x 84	72 x 108	54 x 84	16	124	5	3700
120	DSL-20-120	2000	1000	54 x 96	72 x 120	54 x 96	14	134	5	3400
120	DSL-40-120	4000	2000	54 x 96	72 x 120	54 x 96	14	134	5	3800
120	DSL-60-120	6000	3000	54 x 96	72 x 120	54 x 96	16	136	5	4200
144	DSL-20-144	2000	1000	54 x 108	72 x 132	54 x 108	16	160	5	3600
144	DSL-40-144	4000	2000	54 x 108	72 x 132	54 x 108	16	160	5	4000
144	DSL-60-144	6000	3000	54 x 108	72 x 132	54 x 108	18	162	5	4500
<b>TSL Series Triple Scissor Lift Tables</b>										
96	TSL-30-096	3000	1500	30 x 48	48 x 72	30 x 48	14¼	110¼	3	2400
96	TSL-60-096	6000	3000	30 x 48	48 x 72	30 x 48	21¼	117¼	3	2850
120	TSL-30-120	3000	1500	30 x 60	48 x 84	30 x 60	14¼	134¼	3	2550
120	TSL-60-120	6000	3000	30 x 60	48 x 84	30 x 60	21¼	141¼	3	3000
144	TSL-30-144	3000	1500	48 x 72	60 x 96	48 x 72	19¼	163¼	5	3000
144	TSL-60-144	6000	3000	48 x 72	60 x 96	48 x 72	22¼	166¼	5	3500
180	TSL-30-180	3000	1500	60 x 96	84 x 120	60 x 96	42	222	5	6500
180	TSL-60-180	6000	3000	60 x 96	84 x 120	60 x 96	42	222	5	8000
<b>QSL Series Quad Scissor Lift Tables</b>										
240	QSL-30-240	3000	1500	60 x 96	84 x 120	60 x 93	54	294	5	7500
240	QSL-60-240	6000	3000	60 x 96	84 x 120	60 x 93	54	294	5	9000
288	QSL-30-288	3000	1500	60 x 120	84 x 144	60 x 112	68	356	5	8000
288	QSL-60-288	6000	3000	60 x 120	84 x 144	60 x 112	68	356	5	10850





Floor Level Lift & Tilt



Floor Level Container Tilter



Floor Level Tilter

## Floor Level Lift & Tilt

These hydraulic scissor lift tables in 2,000 or 4,000 lb. capacities lower flat to the floor allowing them to be loaded and unloaded with a hand pallet truck. The combination lift and tilt feature allows loads to be positioned at the most comfortable height and angle.

### Features

- 33" vertical travel - 30° tilt
- Standard pedestal control
- Optional foot control available
- External 1 HP 115/1/60 power unit
- Optional power units available
- Custom designs available
- One power unit controls lift & tilt
- 3-phase available

Model Number	Load Capacity	Raised Height	Lowered Height	Degree of Tilt	Dimensions W x L	Platform Size	Lifting Speed	Shipping Weight
<b>XZT44 Series</b>								
XZT44-20	2000 lbs	33-3/8"	3/8"	30°	68 x 61"	44 x 48"	39 sec	1255 lbs
XZT44-40	4000 lbs	33-1/2"	1/2"	30°	68 x 61"	44 x 48"	43 sec	1420 lbs
<b>XZT50 Series</b>								
XZT50-20	2000 lbs	33-3/8"	3/8"	30°	74 x 61"	50 x 48"	40 sec	1420 lbs
XZT50-40	4000 lbs	33-1/2"	1/2"	30°	74 x 61"	50 x 48"	44 sec	1505 lbs

## Floor Level Container Tilters

Tilt containers weighing up to 4,000 lbs. to any angle between 0° and 89° for improved access without bending and stretching. Floor level design allows containers to be placed on the tilter with a hand pallet truck.

### Features

- Custom platform sizes
- Internal 1 HP 115/1/60 power unit
- Floor level at lowered height
- Pallet jack accessible
- Optional power units available
- 6" flexible safety toe guard
- Hand-control with magnetic back
- Custom designs available
- 50" I.D. x 30-1/8" side height

Model Number	Tilt Capacity	Lowered Height	Degree of Tilt	Dimensions W x L	Platform Size	Lifting Speed	Shipping Weight
<b>ZRT Series</b>							
ZRT50-20	2000 lbs	3/8"	89°	59 x 67"	50 x 48"	26 sec	1245 lbs
ZRT50-40	4000 lbs	3/8"	89°	59 x 67"	50 x 48"	28 sec	1295 lbs

## Floor Level Tilters

TZ Series Floor Level Tilters position container loads at any angle between 0° and 45°. Floor level design allows containers to be placed on the tilter with a hand pallet truck.

### Features

- 2000 - 4000 lb capacity
- Floor level at lowered height
- External 1 HP 115/1/60 power unit
- Optional power units available
- Hand-control with magnetic back
- 6" flexible safety toe guard

Model Number	Tilt Capacity	Lowered Height	Degree of Tilt	Dimensions W x L	Platform Size	Lifting Speed	Shipping Weight
<b>TZ44 Series</b>							
TZ44-20	2000 lbs	3/8"	45°	55 x 60-1/2"	44 x 48"	30 sec	1200 lbs
TZ44-40	4000 lbs	3/8"	45°	55 x 60-1/2"	44 x 48"	32 sec	1155 lbs
TZ44-60	6000 lbs	1/2"	45°	55 x 60-1/2"	44 x 48"	36 sec	1235 lbs
<b>TZ50 Series</b>							
TZ50-20	2000 lbs	3/8"	45°	63 x 60-1/2"	50 x 48"	30 sec	1215 lbs
TZ50-40	4000 lbs	3/8"	45°	63 x 60-1/2"	50 x 48"	34 sec	1240 lbs
TZ50-60	6000 lbs	1/2"	45°	63 x 60-1/2"	50 x 48"	38 sec	1340 lbs

# Container Tilters

## Stationary Container Tilters

For dedicated container tilting applications, this stationary tilter is an ideal, economical solution. Wide fork channels allow containers to be placed on it with a hand pallet truck. Loads can be tilted to any angle between 0° and 89° for easy access to container contents.

### Features

- Internal 1 HP 115/1/60 power unit
- Push-button hand-held control with magnetic backing for mounting
- Optional foot-control available
- Compact frame design
- Designed to be lagged down to the floor
- Fork channels allow for easy loading with a pallet jack or forklift
- Flexible safety toe guards on forks
- Custom designs available

Model Number	Tilt Capacity	Lowered Height	Degree of Tilt	Dimensions W x L	Fork Length	Lifting Speed	Shipping Weight
<b>SRT Series</b>							
SRT20	2000 lbs	3/8"	89°	33 x 58"	40"	23 sec	885 lbs
SRT40	4000 lbs	3/8"	89°	33 x 58"	40"	24 sec	900 lbs



SRT model

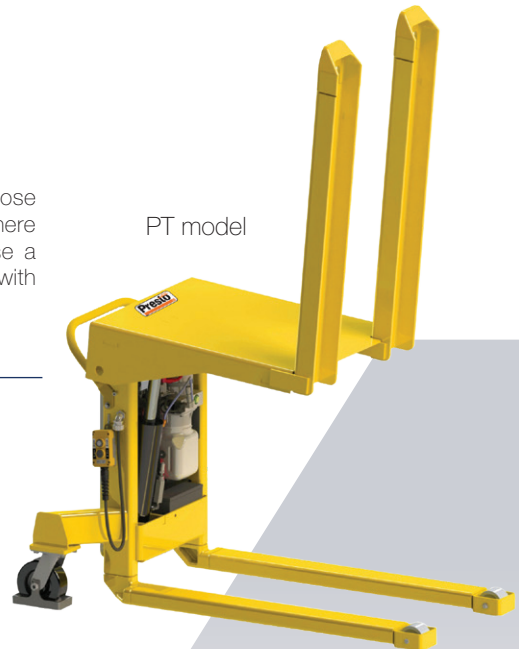
## Portable Container Tilters

These portable, battery powered container tilters go anywhere they are needed. Choose them for applications that require sharing between multiple users or work cells, or where workers need to pick up and return containers to and from staging areas. Choose a Non-Straddle unit for use with most standard containers or a Straddle unit for use with containers that have reinforcing leg bars.

### Features

- 2000 - 4000 lb capacities
- 85° tilt
- Easy-to-service internal DC motor
- Optional 115V AC or air motors available
- Push-button control with magnetic backing
- Internal battery charger
- Foot-operated floor lock
- 12V maintenance free, leak-proof AGM battery
- Push handle lowers when in use
- Custom designs available

Model Number	Tilt Capacity	Lowered Height	Degree of Tilt	Dimensions W x L	Fork Length	Fork O.D.	Lifting Speed	Shipping Weight
<b>PT Series - Non-Straddle</b>								
PT-20	2000 lbs	3-1/2"	85°	34 x 54"	40"	24-1/2"	37 sec	700 lbs
PT-40	4000 lbs	3-1/2"	85°	34 x 61"	40"	26-1/8"	30 sec	900 lbs
<b>PTS Series - 50" I.D. Straddle</b>								
PTS50-20	2000 lbs	3-1/2"	85°	57 x 54"	40"	24"	37 sec	950 lbs
PTS50-40	4000 lbs	3-1/2"	85°	57 x 58"	40"	25"	30 sec	1150 lbs



PT model



PTS straddle model

## SpaceSaver CLTLT Series Tilters

Heavy-duty tilting lift tables with capacities of 2,000 to 6,000 lbs., and tilt angles up to 45° with platform sizes of 24 x 48 in. to 48 x 60 in. The CLTLT lifts and tilts within its own base frame, requiring minimal floor space to operate.

- Base and platform leg rollers are captured within the channel frame for maximum stability
- Internally-mounted 3/4 HP, 115/230V, 1PH, 60Hz, or 208/230/460V, 3PH, 60Hz intermittent-duty TENV super torque motor
- 24V operating control voltage
- Push-button pendant or foot control switch
- 12 in. high lip on pivot end
- Double-acting hydraulic cylinders
- Surfaces degreased, oxide primed and finished with two coats of enamel
- Lifetime self-lubricating, anti-friction bearings at all pivot points



CLT-LT with semi-live portability option

Model Number	Capacity (lbs)	Standard Platform (in)	Max Platform (in)	Base Frame (in)	Low Height (in)	Lifting Speed (sec.)	Motor (HP)	Shipping Weight (lbs)
<b>CLTLT Series - 45° Tilt Angle</b>								
CLTLT-02-45	2000	24 x 48	48 x 60	22½ x 47	61/8	15	3/4	675
CLTLT-04-45	4000	24 x 48	48 x 60	22½ x 47	10	22	3/4	725



Model X3WT with standard pedestal control

## Scissor Lift & Tilt

Lift height and tilt angle are controlled independently allowing operators to position loads precisely at the most comfortable height and working angle. Because the tilt cylinder is set into the lifting platform, the unit's lowered height is reduced.

### Features

#### X3WT and X4WT Series

- One power unit for lift & tilt functions
- Internal 1 HP 115/1/60 power unit
- Standard pedestal controls
- Optional foot or hand controls available
- Choose 30° or 45° tilt

#### XLT Series

- Lift Power: 1 HP 115/1/60
- Tilt Power: 1 HP 115/1/60
- Standard dual hand or foot controls
- Optional pedestal controls available
- Choose 30° or 45° tilt
- 60° and 89° tilt models available

Lift & Tilt tables are great products to prevent excessive bending and reaching into containers. However, it is always important to know the size of the load, including height, to help determine the load center of gravity as it moves through the tilt application. Please contact your sales coordinator when considering a Lift & Tilt unit for your customer's application.

Model Number	Load Capacity	Raised Height	Lowered Height	Degree of Tilt	Standard Base	Maximum Platform	Lifting Speed	Tilting Speed	Shipping Weight
<b>X3WT Series</b>									
X3WT36-20	2000 lbs	46-3/4"	11-1/2"	30°/45°	36 x 48"	60 x 60"	42 sec	8 sec	1370 lbs
X3WT36-40	4000 lbs	46-3/4"	11-1/2"	30°/45°	36 x 48"	60 x 60"	43 sec	8 sec	1420 lbs
<b>X4WT Series</b>									
X4WT36-20	2000 lbs	46-3/4"	11-1/2"	30°/45°	48 x 48"	72 x 60"	42 sec	8 sec	1450 lbs
X4WT36-40	4000 lbs	46-3/4"	11-1/2"	30°/45°	48 x 48"	72 x 60"	43 sec	8 sec	1500 lbs
<b>XLT Series</b>									
XLT36-10	1000 lbs	49-3/4"	13-3/4"	30°/45°	24 x 48"	48 x 48"	20 sec	15 sec	1000 lbs
XLT36-20	2000 lbs	50-3/4"	14-3/4"	30°/45°	24 x 48"	50 x 50"	30 sec	15 sec	1100 lbs
XLT36-40	4000 lbs	50-3/4"	14-3/4"	30°/45°	24 x 48"	50 x 50"	44 sec	15 sec	1350 lbs

# Tilt Tables / 90° Tilters / Upenders

## Standard Tilt Tables

These fixed height tilters can be mounted on legs, workbenches or directly on the floor. They are ideal for odd shaped or sized containers or odd loads. They are available with 30°, or 45° of tilt and capacities from 1,000 to 6,000 lbs.

### Features

- Internal 1/2 HP 115/1/60 power unit on 1,000 & 2,000 lb. units. 1 HP on 4,000 & 6,000 lb. units
- 8" standard lip, optional lip heights available
- Optional power units available
- Hand-held pendant control standard

Model Number	Capacity	Lowered Height	Degree of Tilt	Standard Platform W x L	Maximum Platform W x L	Maximum Platen W x L	Shipping Weight
<b>TT30 Series</b>							
TT30-10	1000 lbs	7-1/2"	30°	24" x 36"	48" x 48"	48" x 36"	500 lbs/
TT30-20	2000 lbs	7-1/2"	30°	24" x 36"	72" x 48"	72" x 48"	600 lbs
TT30-40	4000 lbs	7-1/2"	30°	24" x 36"	72" x 48"	72" x 48"	700 lbs
TT30-60	6000 lbs	7-1/2"	30°	36" x 36"	72" x 48"	72" x 48"	800 lbs
<b>TT45 Series</b>							
TT45-10	1000 lbs	7-1/2"	45°	24" x 36"	48" x 48"	48" x 36"	500 lbs/
TT45-20	2000 lbs	7-1/2"	45°	24" x 36"	72" x 48"	72" x 48"	600 lbs
TT45-40	4000 lbs	7-1/2"	45°	24" x 36"	72" x 48"	72" x 48"	700 lbs
TT45-60	6000 lbs	7-1/2"	45°	36" x 36"	72" x 48"	72" x 48"	800 lbs



TT Series with 45° of Tilt

## 90° Tilters and Upenders

Heavy-duty upenders with capacities of 2,000 to 10,000 lbs. and tilt angles up to 90° with a wide range of platform and platen sizes. Typically used to reorient loads (rolls and coils) from horizontal to vertical positions. HUE Series Hydraulic Upenders can be mounted on scissor lifts or used as free-standing upenders.

### Features

- 24V operating control voltage
- Limit switch and mechanical stops in both directions included
- Double-acting hydraulic cylinders
- Hard, chrome-plated, polished shafting, hydraulic cylinder piston rods and axles
- Surfaces degreased, oxide primed and finished with two coats of enamel
- Lifetime self-lubricating, anti-friction bearings at all pivot points

Model Number	Load Capacity	Platform Height*	Platen-Height*	Degree of Tilt	Min. Platform	Max. Platform	Max. Platen	Standard Voltage
<b>UT90-L Series - Formely WT90 Series</b>								
UT90-10-L	1000	8.5	6"	90	24" x 32"	48" x 72"	48" x 48"	115/1/60
UT90-20-L	2000	8.5	6"	90	36" x 42"	72" x 72"	72" x 48"	115/1/60
UT90-40-L	4000	8.5	6"	90	36" x 42"	72" x 60"	72" x 36"	115/1/60
UT90-60-L	6000	10.5	6"	90	32" x 48"	72" x 54"	72" x 30"	115/1/60
<b>UT90-H Series</b>								
UT90-10-H	1000 lbs	25"	6"	90°	24" x 48"	48" x 60"	48" x 48"	115/1/60
UT90-20-H	2000 lbs	25"	6"	90°	36" x 48"	48" x 84"	48" x 48"	460/3/60
UT90-40-H	4000 lbs	25"	6"	90°	36" x 48"	48" x 84"	48" x 48"	460/3/60
UT90-60-H	6000 lbs	25"	6"	90°	36" x 48"	48" x 84"	48" x 48"	460/3/60
UT90-80-H	8000 lbs.	25"	6"	90°	48" x 48"	60" x 96"	60" x 60"	460/3/60
UT90-100-H	10000 lbs	25"	6"	90°	48" x 48"	60" x 96"	60" x 60"	460/3/60
<b>EEOA HUE Series</b>								
HUE-02-90	2000 lbs	8.5	8.5	90°	36" x 36"	24" x 36"	48" x 48"	460/3/60
HUE-04-90	4000 lbs	8.5	8.5	90°	36" x 36"	24" x 36"	48" x 48"	460/3/60
HUE-06-90	6000 lbs	10.5	10.5	90°	36" x 36"	24" x 36"	48" x 48"	460/3/60
HUE-08-90	8000 lbs	10.5	10.5	90°	36" x 36"	30" x 50"	48" x 72"	460/3/60
HUE-10-90	10000 lbs	10.5	10.5	90°	36" x 36"	30" x 50"	48" x 48"	460/3/60

\*when parallel to the floor



UT90-L Series



UT90-H Series



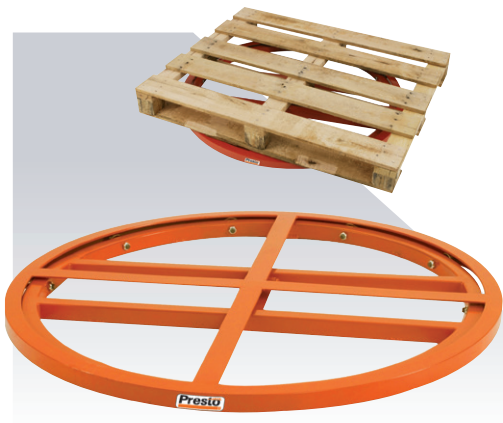
HUE Series



Standard Turntable shown mounted on Hydraulic Lift



Powered Turntable with round platform



Presto Ring Floor-Mount Turntable



Low-Profile Turntable

## Standard Turntables

Standard Turntables can be mounted directly to the floor, on a floor stand or table, or even on a scissor lift table. Platform sizes range from 24" x 24" up to 48" x 54". They can accommodate uniform loads of up to 6,000 lbs.

### Features

- 1/2" thick platform with radius corners, base plate, center shaft with bearing, and inverted ball roller bearing assemblies
- Standard height is 2-3/4"
- 180° spring position detents
- 90° spring position detents
- 90° positive locking positioner
- Round turntable in place of square platform
- Other sizes available; contact Sales
- Turret-style bearing is available for heavier loads and larger sizes; contact Sales
- Raised floor stand/sub base available - specify desired elevation; contact Sales
- Powered turntables are available. Standard height is 9"; contact Sales

Turntable Size	Shipping Weight
<b>Standard Turntables</b>	
24 x 24"	200 lbs
24 x 36"	250 lbs
36 x 36"	300 lbs
36 x 48"	350 lbs
42 x 42"	400 lbs
42 x 48"	425 lbs
48 x 48"	450 lbs
48 x 56"	500 lbs

## Presto Ring Floor-Mount Turntable

The Presto Ring Floor Mount Turntable is a two-piece portable device that consists of an inner ring studded with anti-friction bearings and an outer ring which sits over it and rotates. Ideal for pallet loading and unloading, it allows workers to easily access all four sides of a load without walking around the pallet.

### Features

- 2-1/8" high turntable with multiple bearings around the entire ring
- Use on the floor or fixed height platform
- 4400 lb capacity

Model Number	Load Capacity	Lowered Height	Turntable Diameter	Shipping Weight
<b>Floor-Mount Turntable</b>				
RFT	4400 lbs	2-1/8"	43-5/8"	70 lbs

## Low-Profile Turntable

The LPT sits on the floor and has a tapered edge to allow hand pallet trucks to roll up onto it and place or remove a pallet. Turntable can be locked when not in use.

### Features

- 7/8" height allows for pallet jack loading
- Outer ring notch allows for lifting the turntable off the floor for easy relocation
- No lagging required
- 4000 lb capacity

Model Number	Load Capacity	Lowered Height	Turntable Diameter	Overall Dimensions	Shipping Weight
<b>Low-Profile Turntable</b>					
LPT	4000 lbs	7/8"	43-5/8"	48-5/8"	250 lbs

# Pneumatic Lift Tables

## Pneumatic Scissor Lifts

These units achieve lift via a heavy-duty airbag system. They require no electricity and can be used anywhere that shop air is available. They require less maintenance than conventional scissor lifts and because there is no hydraulic fluid, there is no potential for process contamination.

### Features

- Pressure relief valve standard
- Lifetime warranty on actuator
- Air requirements - 80 psi at 15 cfm
- Standard pedestal control
- Optional foot control
- Designed for stationary use and must be lagged to the floor
- Custom platforms available
- Hand control is not available on any pneumatic lift/tilts



Model Number	Load Capacity	Raised Height	Lowered Height	Vertical Travel	Base Size W x L	Platform Size W x L	Shipping Weight
<b>AX10 Series</b>							
AX10-3648	1000 lbs	29"	8"	21"	36 x 48"	36 x 48"	820 lbs
AX10-4848	1000 lbs	29"	8"	21"	36 x 48"	48 x 48"	890 lbs
AX10-4856	1000 lbs	29"	8"	21"	36 x 48"	48 x 56"	935 lbs
AX10-4860	1000 lbs	29"	8"	21"	36 x 48"	48 x 60"	960 lbs
<b>AX20 Series</b>							
AX20-3648	2000 lbs	32"	8"	24"	36 x 48"	36 x 48"	855 lbs
AX20-4848	2000 lbs	32"	8"	24"	36 x 48"	48 x 48"	915 lbs
AX20-4856	2000 lbs	32"	8"	24"	36 x 48"	48 x 56"	955 lbs
AX20-4860	2000 lbs	32"	8"	24"	36 x 48"	48 x 60"	1040 lbs
<b>AX40 Series</b>							
AX40-4848	4000 lbs	32"	8"	24"	48 x 48"	48 x 48"	1040 lbs
AX40-4856	4000 lbs	32"	8"	24"	48 x 48"	48 x 56"	1115 lbs
AX40-4860	4000 lbs	32"	8"	24"	48 x 48"	48 x 60"	1135 lbs

## Heavy-Duty Pneumatic Scissor Lifts

These pneumatic scissor lifts feature additional airbags to achieve increased capacity for handling heavier loads up to 8,000 lbs.

### Features

- Lifetime warranty on actuator
- Pressure relief valve standard
- Air requirements are 80 psi at 15 cfm
- Standard pedestal control
- Optional foot control
- Transportable version available
- No floor lagging necessary
- Custom platforms available



Model Number	Load Capacity	Raised Height	Lowered Height	Vertical Travel	Base Size W x L	Platform Size W x L	Shipping Weight
<b>AXS20 Series</b>							
AXS20-3648	2000 lbs	36"	12"	24"	36 x 48"	36 x 48"	855 lbs
AXS20-4848	2000 lbs	36"	12"	24"	36 x 48"	48 x 48"	915 lbs
AXS20-4856	2000 lbs	36"	12"	24"	36 x 48"	48 x 56"	955 lbs
AXS20-4860	2000 lbs	36"	12"	24"	36 x 48"	48 x 60"	1040 lbs
<b>AXS40 Series</b>							
AXS40-3648	4000 lbs	36"	12"	24"	36 x 48"	36 x 48"	1020 lbs
AXS40-4848	4000 lbs	36"	12"	24"	36 x 48"	48 x 48"	1040 lbs
AXS40-4856	4000 lbs	36"	12"	24"	36 x 48"	48 x 56"	1115 lbs
AXS40-4860	4000 lbs	36"	12"	24"	36 x 48"	48 x 60"	1135 lbs
<b>AXS60 Series</b>							
AXS60-4848	6000 lbs	36"	12"	24"	48 x 48"	48 x 48"	1170 lbs
AXS60-4856	6000 lbs	36"	12"	24"	48 x 48"	48 x 56"	1315 lbs
AXS60-4860	6000 lbs	36"	12"	24"	48 x 48"	48 x 60"	1335 lbs
<b>AXS80 Series</b>							
AXS80-4848	8000 lbs	36"	12"	24"	48 x 48"	48 x 48"	1340 lbs
AXS80-4856	8000 lbs	36"	12"	24"	48 x 48"	48 x 56"	1415 lbs
AXS80-4860	8000 lbs	36"	12"	24"	48 x 48"	48 x 60"	1435 lbs



# Pneumatic Lift & Tilt Tables

## Pneumatic Scissor Lift & Tilt

Lift loads to the most comfortable working height, and then tilt them for easy access. Tilt tops can be equipped with special fixtures, lips and gussets for positioning a wide range of baskets and containers.

### Features

- Standard pedestal control/Optional foot control
- Air requirements are 80 psi at 15 cfm
- Pressure relief valve standard
- Lifetime warranty on actuator
- Custom designs available
- 30° & 45° tilt available



## Heavy-Duty Pneumatic Lift & Tilt



AXST with flat lip option

## Pneumatic Tilt Tables

Pneumatic Tilt Tables can be mounted directly to the floor or on an optional stand. Equipped with a restraining chain to prevent over travel.



Model Number	Load Capacity	Raised Height	Lowered Height	Degree of Tilt	Vertical Travel	Base Size W x L	Platform Size W x L	Shipping Weight
<b>AXT10 Series</b>								
AXT10-3648	1000 lbs	36"	15"	30°	21"	36 x 48"	36 x 48"	1190 lbs
AXT10-4848	1000 lbs	36"	15"	30°	21"	36 x 48"	48 x 48"	1300 lbs
AXT10-4856	1000 lbs	36"	15"	30°	21"	36 x 48"	48 x 56"	1390 lbs
AXT10-4860	1000 lbs	36"	15"	30°	21"	36 x 48"	48 x 60"	1440 lbs
<b>AXT20 Series</b>								
AXT20-3648	2000 lbs	39"	15"	30°	24"	36 x 48"	36 x 48"	1365 lbs
AXT20-4848	2000 lbs	39"	15"	30°	24"	36 x 48"	48 x 48"	1395 lbs
AXT20-4856	2000 lbs	39"	15"	30°	24"	36 x 48"	48 x 56"	1450 lbs
AXT20-4860	2000 lbs	39"	15"	30°	24"	36 x 48"	48 x 60"	1540 lbs
<b>AXT40 Series</b>								
AXT40-4848	4000 lbs	39"	15"	30°	24"	48 x 48"	48 x 48"	1540 lbs
AXT40-4856	4000 lbs	39"	15"	30°	24"	48 x 48"	48 x 56"	1595 lbs
AXT40-4860	4000 lbs	39"	15"	30°	24"	48 x 48"	48 x 60"	1635 lbs

Model Number	Load Capacity	Raised Height	Lowered Height	Degree of Tilt	Vertical Travel	Base Size W x L	Platform Size W x L	Shipping Weight
<b>AXST20 Series</b>								
AXST20-3648	2000 lbs	43"	19"	30°	24"	36 x 48"	36 x 48"	1200 lbs
AXST20-4848	2000 lbs	43"	19"	30°	24"	36 x 48"	48 x 48"	1320 lbs
AXST20-4856	2000 lbs	43"	19"	30°	24"	36 x 48"	48 x 56"	1460 lbs
AXST20-4860	2000 lbs	43"	19"	30°	24"	36 x 48"	48 x 60"	1540 lbs
<b>AXST40 Series</b>								
AXST40-3648	4000 lbs	43"	19"	30°	24"	36 x 48"	36 x 48"	1450 lbs
AXST40-4848	4000 lbs	43"	19"	30°	24"	36 x 48"	48 x 48"	1570 lbs
AXST40-4856	4000 lbs	43"	19"	30°	24"	36 x 48"	48 x 56"	1690 lbs
AXST40-4860	4000 lbs	43"	19"	30°	24"	36 x 48"	48 x 60"	1770 lbs
<b>AXST60 Series</b>								
AXST60-4848	6000 lbs	43"	19"	30°	24"	48 x 48"	48 x 48"	1660 lbs
AXST60-4856	6000 lbs	43"	19"	30°	24"	48 x 48"	48 x 56"	1780 lbs
AXST60-4860	6000 lbs	43"	19"	30°	24"	48 x 48"	48 x 60"	1860 lbs
<b>AXST80 Series</b>								
AXST80-4848	8000 lbs	43"	20"	30°	23"	48 x 48"	48 x 48"	1735 lbs
AXST80-4856	8000 lbs	43"	20"	30°	23"	48 x 48"	48 x 56"	1850 lbs
AXST80-4860	8000 lbs	43"	20"	30°	23"	48 x 48"	48 x 60"	1930 lbs

Model Number	Load Capacity	Lowered Height	Degree of Tilt*	Base Size W x L	Platform Size W x L	Shipping Weight
<b>AT10 Series</b>						
AT10-3648	1000 lbs	7"	30°	36 x 48"	36 x 48"	640 lbs
AT10-4848	1000 lbs	7"	30°	36 x 48"	48 x 48"	700 lbs
AT10-4856	1000 lbs	7"	30°	36 x 48"	48 x 56"	750 lbs
AT10-4860	1000 lbs	7"	30°	36 x 48"	48 x 60"	770 lbs
<b>AT20 Series</b>						
AT20-3648	2000 lbs	7"	30°	36 x 48"	36 x 48"	690 lbs
AT20-4848	2000 lbs	7"	30°	36 x 48"	48 x 48"	770 lbs
AT20-4856	2000 lbs	7"	30°	36 x 48"	48 x 56"	835 lbs
AT20-4860	2000 lbs	7"	30°	36 x 48"	48 x 60"	855 lbs
<b>AT40 Series</b>						
AT40-4848	4000 lbs	7"	30°	36 x 48"	48 x 48"	795 lbs
AT40-4856	4000 lbs	7"	30°	36 x 48"	48 x 56"	850 lbs
AT40-4860	4000 lbs	7"	30°	36 x 48"	48 x 60"	880 lbs
<b>AT60 Series</b>						
AT60-4848	6000 lbs	7"	30°	48 x 48"	48 x 48"	890 lbs
AT60-4856	6000 lbs	7"	30°	48 x 48"	48 x 56"	970 lbs
AT60-4860	6000 lbs	7"	30°	48 x 48"	48 x 60"	1040 lbs

\*Optional 45° tilt available

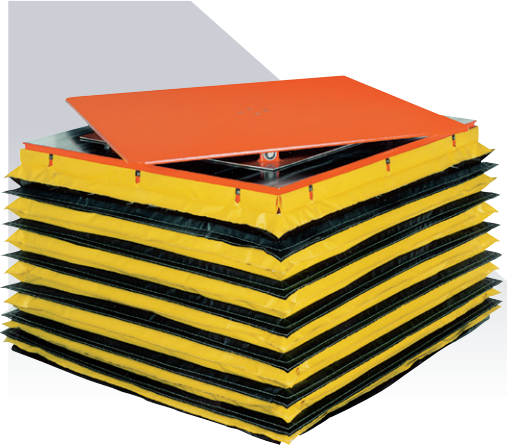
# Pneumatic Lift & Rotate

## Pneumatic Scissor Lift & Rotate

Raise loads to a comfortable height and rotate them with the integrated turntable for loading, unloading or working on the side nearest the operator.

### Features

- Standard pedestal control, foot control optional
- Pressure relief valve standard
- Lifetime warranty on actuator
- Air requirements: 80 psi at 15 cfm



Shown with optional bellows skirting



Model Number	Load Capacity	Raised Height	Lowered Height	Vertical Travel	Base Size W x L	Platform Size W x L	Shipping Weight
<b>AXR10 Series</b>							
AXR10-3648	1000 lbs	32"	11"	21"	36 x 48"	36 x 48"	1055 lbs
AXR10-4848	1000 lbs	32"	11"	21"	36 x 48"	48 x 48"	1185 lbs
AXR10-4856	1000 lbs	32"	11"	21"	36 x 48"	48 x 56"	1280 lbs
AXR10-4860	1000 lbs	32"	11"	21"	36 x 48"	48 x 60"	1320 lbs
<b>AXR20 Series</b>							
AXR20-3648	2000 lbs	35"	11"	24"	36 x 48"	36 x 48"	1155 lbs
AXR20-4848	2000 lbs	35"	11"	24"	36 x 48"	48 x 48"	1295 lbs
AXR20-4856	2000 lbs	35"	11"	24"	36 x 48"	48 x 56"	1385 lbs
AXR20-4860	2000 lbs	35"	11"	24"	36 x 48"	48 x 60"	1450 lbs
<b>AXR40 Series</b>							
AXR40-4848	4000 lbs	35"	11"	24"	48 x 48"	48 x 48"	1420 lbs
AXR40-4856	4000 lbs	35"	11"	24"	48 x 48"	48 x 56"	1550 lbs
AXR40-4860	4000 lbs	35"	11"	24"	48 x 48"	48 x 60"	1595 lbs

## Heavy-Duty Pneumatic Scissor Lift & Rotate

Extra capacity to handle loads up to 8,000 lbs. Turntable fabricated from ½" steel plate.

Model Number	Load Capacity	Raised Height	Lowered Height	Vertical Travel	Base Size W x L	Platform Size W x L	Shipping Weight
<b>AXSR20 Series</b>							
AXSR20-3648	2000 lbs	39"	15"	24"	36 x 48"	36 x 48"	1155 lbs
AXSR20-4848	2000 lbs	39"	15"	24"	36 x 48"	48 x 48"	1295 lbs
AXSR20-4856	2000 lbs	39"	15"	24"	36 x 48"	48 x 56"	1385 lbs
AXSR20-4860	2000 lbs	39"	15"	24"	36 x 48"	48 x 60"	1450 lbs
<b>AXSR40 Series</b>							
AXSR40-3648	4000 lbs	39"	15"	24"	36 x 48"	36 x 48"	1370 lbs
AXSR40-4848	4000 lbs	39"	15"	24"	36 x 48"	48 x 48"	1420 lbs
AXSR40-4856	4000 lbs	39"	15"	24"	36 x 48"	48 x 56"	1550 lbs
AXSR40-4860	4000 lbs	39"	15"	24"	36 x 48"	48 x 60"	1595 lbs
<b>AXSR60 Series</b>							
AXSR60-4848	6000 lbs	39"	15"	24"	48 x 48"	48 x 48"	1620 lbs
AXSR60-4856	6000 lbs	39"	15"	24"	48 x 48"	48 x 56"	1750 lbs
AXSR60-4860	6000 lbs	39"	15"	24"	48 x 48"	48 x 60"	1795 lbs
<b>AXSR80 Series</b>							
AXSR80-4848	8000 lbs	39"	15"	24"	48 x 48"	48 x 48"	1720 lbs
AXSR80-4856	8000 lbs	39"	15"	24"	48 x 48"	48 x 56"	1850 lbs
AXSR80-4860	8000 lbs	39"	15"	24"	48 x 48"	48 x 60"	1895 lbs

# Hydraulic/Pneumatic Lift Options

## Mechanical Options

For Hydraulic and Pneumatic Lift Tables

**Oversized Platform** - platforms can be increased in width and length up to an additional 24". Side- and end-load capacities are de-rated 2% per inch of increase. Oversized models must be lagged to the floor. *Tandem and Dual Series Lift Tables*

**Turntables** - See Page 31. Available free-standing, mounted to a stand, or installed on a scissor lift.

**Gravity Conveyor Top** - for straight-line movement of work loads. Available with 1-9/10" and 2-1/2" diameter steel rollers. Specify roller centers. This option adds either 3-3/4" or 4-3/8" to the lowered and raised elevations.

**Ball Transfer Top** - for multi-directional movement of work loads. Available with 1" diameter steel ball casters. Specify ball centers. This option adds either 2-3/4" or 3-3/4" to the lowered and raised elevations.

**Fixed End & Side Rails** - mounted to lift platform or conveyor section. Specify rail height.

**Optional Platforms & Overlay Material** - for special handling of loads. V-cradle tops, stainless steel, diamond plate, and UHMW.

**Pit-Mounted Units** - for ground-level applications, requires either a platform with beveled edges or electromechanical toe guard. Lifting eyes required for installation and external motor recommended.

**Platform with Beveled Edges** - welded at 30° angles, increases the standard platform by 4" on all sides.

**Electro-Mechanical Toe Guard and Toe Sensor Edge** - mounted to the underside of the platform, adds 4" on all sides.

**Lifting Eyes** - provided for installation and transporting of a unit with a sling or a lifting chain.

**Accordion (Bellows) Skirt** - designed to cover the scissor leg assembly of the lift table. **Hydraulic** - XL24 Series, XL36 Series, XL48 series, XL60 Series. **Pneumatic** AX Series, AXS Series, AXT Series AXST Series AXR Series, AT Series. Additional models and portable lifts, contact Sales.

**Portable / Semi Live Arrangement** - Includes two fixed 5" wheels on one side/end (specify side or end mount) and a pull plate with a wheeled dolly handle on the opposite end/side of the base frame. For moving lifts when empty. XL models, X3W and X4W models, AXS20, AXS40, AXS 60 Oversized Platform & other models contact Sales.

**Transportable Units** - Two rigid and two swivel casters with 6" dia. steel or texite wheels (please specify) and one Presto heavy-duty foot operated floor lock. This option adds between 5" and 10-1/4" to the lowered and raised elevation (elevations vary with caster location; consult Sales if the lowered height is critical). **Hydraulic Models** XL24-20, 40, XL36-20, 40, XL48-20, 40, XL60-20, 40, X3W24-20, 40, X3W36-20, 40, X3W48-20, 40 X4W24-20, 40, X4W36-20 X4W48-20, 40 X4.5W-20, 40

**Pneumatic Models** AXS20, AXS40, AXS60  
Models with oversized platforms, and Lift & Tilt models contact Sales.

**Flanged or V-Grooved Wheels** - 5" steel wheels for Transportable Units only, sold per pair.

**Removable Push Handle**

**Fork Pockets** - 6" x 3" or 8" x 3" enclosed steel tube. Specify fork spread when consulting sales. Adds 3" to the lowered and raised elevations when mounted under the base frame.

**Super Cycle (Hydraulic Only)** - For high-cycle applications, contact Sales. Components in the base frames have been designed for high-volume, repetitive lifting applications.

**Floor Stands** - increase the lowered height of tilters. Specify desired elevation.

**Motion Stabilizer (Pneumatic Only)** - reduces the bounce found in pneumatic tilt tables.

## Electric & Hydraulic Options

Description and Specification

**NEMA 1 foot control with Safety Cover and 10' cord**  
(in place of standard hand control)

**NEMA 1 wall mount pushbutton, no cord**  
(in place of standard hand control)

**NEMA 4 Hand controls and NEMA 4 foot controls**

**Pedestal-mounted Controls** - NEMA 12 controller mounted on a rugged steel stand with momentary push buttons.

**Optional Control Voltage** - standard control voltage is 115V/1/60, can be upgraded to 24V/1/60 or 24V DC.

**Maintained Contact Controls** - includes one 3-button wall mount push-button station, Up/Down/E-Stop (shipped loose). Price includes upper and lower limit switches.

**External / Remote Power Units** - all three-phase units include a transformer for low-voltage control, 6' of hose and a mounting stand.

**Optional Power Unit Upgrades** - convert from 1HP/115V/single phase to 1-1/2HP/230V/460V/3 phase (when selecting the 1-1/2HP 3 phase motor, please specify either a 1 GPM or 1.5 GPM pump). 3HP and 5HP motor/pump options.

**12V DC & 24V DC Power Units** - please specify if a power source is required. These options are available with or without a battery compartment, and charger.

**Upper Travel Limit Switch** - wired & mounted (N4). Please specify maximum elevation.

**Lower Travel Limit Switch** - wired & mounted (N4). Please specify minimum lowered elevation.

**Velocity Fuse** - a safety feature to lock the unit in position in the event of a total hydraulic pressure loss. Price includes upper travel limit switch.

**Water Washdown Motor Package (NEMA 4)** - Water washdown rated 1HP motor and down valve. Includes oil-tight junction box and control panel. 3HP water wash down motor available.

**Air Power Unit** - air motor with hydraulic pump. 1.5 GPM at 80 PSI and 80 CFM of free air with lift fully loaded. Includes a hand or foot control valve (FRL not included).

*Air Power Unit Options - Air filter & lubricator. Air limit switch (requires external power unit) mounted and plumbed.*

**Fire-Resistant Hydraulic Fluid** - water-glycol fluids are fire-resistant, non-explosive and non-toxic. Approved by Factory Mutual Insurance Engineering Laboratories.

**Low Temp or Aircraft Grade hydraulic fluid**

**Food Grade or Biodegradeable hydraulic fluid**

## Non-Standard and Custom Options

**Custom options and modification request can also be accommodated.**

Our engineers can designed modified or even custom solutions to fit your specific application requirements.

**Call 800-343-9322 to learn more**

# Loading Dock Lifts

## PDL Series

PDL Series Series Dock Lifts are designed for permanent pit or pad mounting. Capacities from 5,000 - 20,000 lbs. with platforms up to 96" x 144".

### Features

- Removable steel handrails
- Four safety chains with snap hooks
- Hinged safety restraint maintenance bars
- Safety tread steel plate platform and bridge plate with 2 safety chains
- Velocity fuses on cylinders
- Upper travel limit switch
- Double wire braid pressure hoses
- Mechanical upper travel back-up stops
- Push-button pendant control
- 24V operating control voltage



PDL Series Standard-Duty



PDL Series Heavy-Duty



Model Number	Vertical Travel (in)	Capacity (lbs.)	Axle Load Max (lbs.)		Standard Platform Size W x L (in)	Maximum Platform Size W x L (in)	Low Height (in)	Raised Height (in)	Up Speed Approx. (sec)	Standard Motor (HP)	Ship Weight (lbs.)
			Ends	Sides							
<b>PDL Series - Standard-Duty</b>											
PDL-60-50	59	5000	2500	2500	72 x 96	96 x 120	8	67	27	3.2	2800
PDL-60-60	59	6000	3000	3000	72 x 96	96 x 120	8	67	27	3.2	2900
PDL-60-80	59	8000	6000	4000	72 x 96	96 x 120	10	69	42	3.2	3200
<b>PDL Series - Heavy-Duty</b>											
PDL-60-100	59	10000	7500	5000	72 x 120	96 x 144	16	75	34	5	5000
PDL-60-120	59	12000	9000	6000	72 x 120	96 x 144	16	75	36	5	5200
PDL-60-160	59	16000	12000	8000	72 x 120	96 x 144	16	75	50	5	5500
PDL-60-200	59	20000	15000	10000	72 x 132	96 x 144	22	81	60	5	7900

## EOA HLD SizzrDok Lifts

The most completely equipped loading docks with the highest structural rating in the industry. Load capacities are 8,000 to 12,000 lbs., travel distances to 60 in. with platform sizes of 48 x 96 in. to 96 x 144 in.

- Safety tread steel plate platform and bridge plate with 2 safety chains
- Removable steel handrails
- Four safety chains with snap hooks
- Structural tube scissor legs and torque tubes
- Hinged safety restraint maintenance bars
- Velocity fuses on cylinders
- Upper travel limit switch
- Mechanical upper travel back-up stops
- Double wire braid pressure hoses
- 5HP, 230/460V, 3PH, 60Hz
- Pushbutton pendant control
- 24V operating control voltage

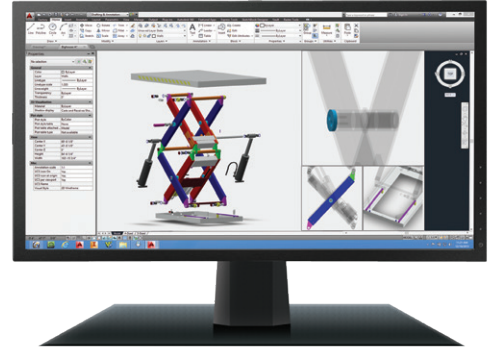


HLD SizzrDok

Model Number	Vertical Travel (in)	Capacity (lbs.)	Axle Load Max (lbs.)		Platform Size W x L (in)	Base Frame (in)	Low Height (in)	Raised Height (in)	Up Speed Approx. (sec)	Standard Motor (HP)	Ship Weight (lbs.)
			Ends	Sides							
<b>HLD SizzrDok Series 080 Series - 8000 Lb. Capacity - Available in multiple platform sizes - Consult Sales for detailed specifications</b>											
HLD-080-Series	60	8000	6500	5000 5200	72 x 96 up to 96 x 120	63 x 88	12	72	15	5	up to 4200
<b>HLD SizzrDok Series 100 Series - 10000 Lb. Capacity - Available in multiple platform sizes - Consult Sales for detailed specifications</b>											
HLD-100-Series	60	10000	7500	5500 7000	72 x 120 up to 96 x 144	63 x 112 88 x 112	14	74	12	5	up to 5800
<b>HLD SizzrDok Series 120 Series - 12000 Lb. Capacity - Available in multiple platform sizes - Consult Sales for detailed specifications</b>											
HLD-120-Series	60	12000	9600	8400	72 x 96 up 96 x 144	63 x 88 88 x 112	16	76	12	5	up to 6300

# Custom Engineered Solutions

We have the people and the tools to create custom products to meet your unique needs. Our in-house professionals have vast experience in the design and manufacture of scissor lifts, loading docks, turntables, tilt tables and upenders. Employing state-of-the-art software with CAD/CAM systems, our inventive engineering department can meet virtually any lifting need, anywhere in the world.



# Product Selection Guidelines

## Guidelines for Stackers

### What Lift Height is required?

Fixed-mast units range from 50"-86". Telescopic (2 stage) mast units range from 94"-144".

### What is the weight of the heaviest load?

1000, 1500, 2000, 2700, and 3000 lb capacities are available. Take into consideration the added weight of the pallet or container. Assumes a uniformly distributed load.

### What is the length (front to back) of the load?

Load center capacity is as important as weight capacity (see separate load center (LC) diagram below).

- 48" long pallets require 24" LC
  - 40" long pallets require 20" LC
- The length of the load must not be longer than twice the size of the rated load center.

### What type of lifting power is needed?

Manually operated lifts should be selected for lighter weights and work cycles. Electric (AC or DC) lifts should be selected for heavier weights and work cycles.

### What is the maximum overall height allowed?

Overall height is 14"-18" higher than the lifting height of the unit. Take into consideration doorways, pipes, lighting, and overhead obstructions.

### What are the width restrictions?

Check the width of all doorways, narrow aisles or congested areas to be navigated. Take into consideration the width of the unit with and without a load.

### What type of load is being lifted?

Would special attachments help? Ram, boom with hook, remote control, special forks, or platforms are available. See the options and attachments on page 12.

### Platform Models

Platform models are used as portable lift tables in numerous ergonomic applications. Oversized platforms are available on special orders.

### Non-Straddle Fork Models

Non-straddle fork models have base legs closer together. Normally used for skids where wheels and base legs, as well as the forks, go under the skid.

### Straddle Fork Models

Straddle fork models have wider base legs, or out-riggers, which straddle the load or pallet. For example, a 50" I.D. on straddle legs would be required for a 48" wide pallet.

### Custom Applications

Many standard lifts can be modified for special lifting tasks. Please contact our Sales department.

## Guidelines for Scissor Lifts

### Vertical Travel

Determine the maximum raised height requirements to select the vertical travel of a unit.

### Load Capacity and Side/End Loading Capacities

Load capacity is the amount of weight of a uniformly distributed and centered load. Side/End capacity is the weight of the load over the edge when the lift is in a fully raised position (often less than the uniformly distributed load capacity).

### Power Supply

Single-phase 1 HP motor or three-phase 1-1/2 HP motor is standard as shown (not available on XS series units). Upon request, motors can be interchanged.

External, remote, and air motors are also available, please contact Sales.

### Frequency and Speed of Operation

The standard motor is rated for intermittent duty. If usage is more than one full lift every four minutes, or jogging action every 10 seconds, the motor will overheat. Optional external power units are available, as well as for increased lifting speed.

### Lowered Height

For a lower than standard height, pit-mounted units (ground level) are available. Pit mounted units must have beveled platform edges or electromechanical toe guards to conform to OSHA recommendations. Toe guards extend the length and the width of a standard platform by 8".

Lifting eyes are also required for installation.

### Platforms

Standard platform sizes conform to standard base sizes.

Platform sizes may be widened and/or lengthened up to an additional 24". Platforms with beveled edges increase the standard platform size by 4" on each side. Side/End capacity is derated by 2% per inch on all oversized platforms.

### Portability

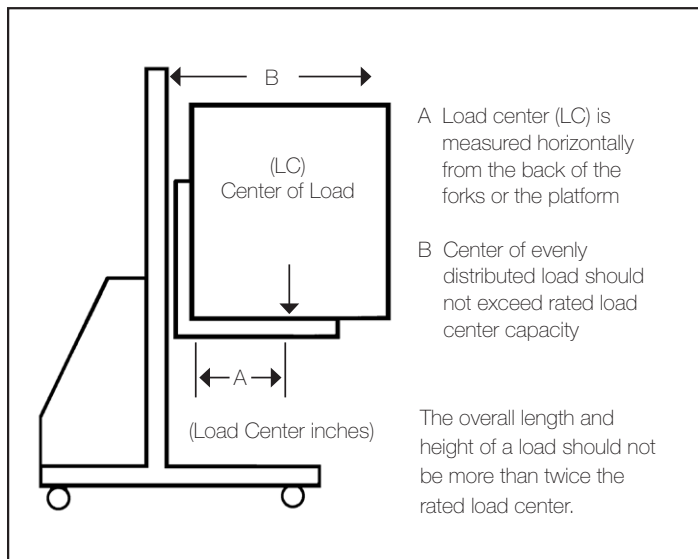
Portability packages are used to move empty lifts. They include 2 steel wheels, side or end mounted, with a wheeled dolly. Please contact Sales if you are looking to add a portability package to a unit with an oversized platform. Transportability packages are used to move lifts carrying a load. They include 2 fixed and 2 swivel casters.

### Electric Controls

Push-button, hand-held controls (NEMA 12) with an 8' cord is standard (NEMA 4X standard on XL, X3, X4 models). Optional foot-operated up/down controls with safety covers, wall-mounted controls (NEMA 4), and pedestal mounted controls with a NEMA 12 push-button enclosure are available. Please contact Sales.

### Other Options

- Stainless steel skin or diamond plate top material
- Conveyor tops
- Turntables
- Ball transfer platforms
- Accordion (bellows) skirts
- Non-flammable and low temperature hydraulic fluid
- Wash down units
- Adjustable flow control valves
- Fork pockets



## Guidelines for Tilt Tables

### Loads Being Tilted

Determine all types of loads that might be tilted, i.e. boxes, pallets, wire baskets, crated, corrugated steel, wire-bound wood boxes, etc. to ensure selection of the correct model.

### Load Capacity

Take into consideration the weight of the container and its contents, as well as off-centered and shifting loads.

### Degree of Tilt

Determine the degree of tilt needed: 30°, 45°, 60°, and 90°. All 60° and 90° tilt tables must be lagged down to the floor.

### Platform Size

Standard platform sizes conform to standard base sizes. Platform sizes can be widened and lengthened. Determine the width, length (depth), and height of the load being tilted.

Standard lip size is 8". Optional oversized lips are available for larger loads (containers). Gussets (1 or 2) for squaring the load (centering) are also available.

### Orientation of Tilt

Determine which side the unit will tilt on. A platform size of 36" x 48" can be tilted on either side depending on the application.

### Type of Mount

Units can be floor-mounted, stand-mounted, or scissor lift-mounted (for vertical lift and tilt). All tilt applications must be lagged to the floor. Lift and tilt applications require tilt tables to be mounted on the roller end of the scissor lifts. Please contact Sales.

### Controls

Hand-held, push-button up/down controls are standard on all tilt tables. Standard and wide-base tilt tables can interchange a foot control. Lightweight tilt tables have an option for a foot control. Lift and tilt applications require two (2) separate controls.

### Power Supply

Standard and wide base tilt tables have 115/1/60 1 HP motors. There is an option for 230, 460/3/60 1-1/2 HP motors. Lightweight tilt tables have 115/1/60 1/3 HP motors only. Lift and tilt applications operate on two (2) separate power units, unless otherwise specified.

The pneumatic power supply assembly includes a refillable chamber that has an interior capable of holding pressurized fluid, a vent, and a fluid inlet. A pressure release mechanism within the chamber permits the pressure within the chamber to vent when the pressure exceeds a predetermined optimum pressure. Pneumatic power is completely operated on plant air and is EPA friendly.

### Standard and Wide-Base Tilter Options

- Oversized lip up to 24" (contact Sales for lips over 24").
- Gussets (reinforcing sides, lip and/or platform).
- Oversized platform (wider and longer) in 6" increments.
- Floor stand - standard height is 12". Custom sizes available.
- Fork pockets (not available for all units).
- 3-phase 1-1/2" motor (208, 230, 460/3/60). Not available for light-weight models.
- External, larger motors are available on some models. Please contact Sales.
- Accordion (bellows) skirting.
- Pit-mounted units require a beveled edge platform or electromechanical toe guards. Please contact Sales.
- Portability and transportability packages available on some models.

## Sales, Warranty and Return Good Authorization Policies

### Sales Policy

For the Presto Lifts sales policy including Pricing Policies, Credit Policies, Shipping Policies, Order Change Policies, Cancellation Policies, and Restocking Policies, visit [Prestolifts.com/Sales](http://Prestolifts.com/Sales) or scan the QR Code



### Limited Warranty Policy

For general product warranty information as well as PowerStak specific warranty information visit [prestolifts.com/lw](http://prestolifts.com/lw) or scan the QR Code



### Return Goods Authorization Policy and Procedures

For the complete Return Goods Authorization (RGA) Policy and procedures visit [Prestolifts.com/rga](http://Prestolifts.com/rga) or scan the QR Code




### Application Worksheet

To ensure that we provide you with the best possible solution for your application please fill out our Application Worksheet.

Visit our website at [prestolifts.com/aw](http://prestolifts.com/aw) or scan the QR Code





**Application Worksheet**

This form will be used in the communication of application details between the end user, the dealer, and Presto to request the initial draft of the sales quote.

**Important Note:** The Sales Quote Issued will be considered the basis for the final design specifications. Please review all specifications on your issued quote prior to placing your order.

Contact Details:  Project Reference:

**Material Handling Problem:**

Description of Issue:

**Load Details:**

Load Type:  Weight (lbs.):  Width" x Length" x Height"  Uniformity:  Static Load Installed?

Additional Load Details:

**Installation Details:**

Equipment Mount:  Environment:  Site Restrictions:

Additional Installation/ Site Details:

**Functionality Details - Sequence of Operation:**

Lift Action:  Rotation:  Tilt / Upend / Unload:

Loading Method:  Loading Position:  Transfer Direction (Loading):

Unloading Method:  Unloading Position:  Transfer Direction (Unloading):

Additional Functionality Details:

**Technical - Design Requirements:**

Primary Power:  Control Voltage:  Operator Control Style:  Cycle Count (Annual):  Min. Capacity Rating:  Min. Stroke and/or Tilt:

Top Style:  Width" x Length" / Platform (TR)  Lowered  Raised  Toe Protection (Required for Pit)

Base Style:  Belows Accordion Skirting (Not Safety Device):  Machine Finish:

Additional Design Requirement Details:

**Commercial Details (For Reference Only):**

# Over 80 Years of Innovation

Since 1944, Presto Lifts, Inc. has been creating precision hydraulic equipment that improves safety and productivity.

In 1977, Presto Lifts began producing a full line of manually propelled lifts and stackers under the name brand of Presto. 1990 saw the introduction of the scissor lift table for in-plant applications. Presto Lifts now offers more than 500 different models of Presto brand Lifts, Tables and Tilters -- more than any other company in the world.

All Presto Lifts products are put through a rigorous 110% capacity testing before shipment, to ensure our high quality standards are achieved. If service is required, all standard replacement parts are carried in stock and are shipped within 24 to 48 hours. To further attest to our commitment to quality, Presto Lifts provides an industry

best 5 year structural and 2 year component warranty on most models. For specific warranty information, please see policies printed inside this catalog.

All products exceed ANSI MH29.1, ANSI MH29.2 and B56.10 standards. Presto Lifts also offers our Quick Ship Program with our most popular products shipping in seven days or less! Providing quick turnaround on our more popular items has allowed our dealers to better serve their customers. In many cases an end user will identify a need and within days the solution is on site.

Dedicated to growth, Presto Lifts is positioned to continue developing new products that will further define the material handling industry.

Distributed by:

Presto ECOA Lifts Inc.  
2 Hampshire Street, Suite 102 • Foxborough, MA 02035  
Tel: 800-343-9322 • Fax: 888-788-6496 • [prestolifts.com](http://prestolifts.com)

